

September 2017



CAPITAL INFRASTRUCTURE NEEDS FOR "COLONIAS" IN DOÑA ANA COUNTY, NEW MEXICO

OVERVIEW

The purpose of this report is to outline the scale of infrastructure investment needed in the *colonias* of Doña Ana County, which is located in south-central New Mexico (Illustration #1).

"*Colonias*" are communities on the U.S side of the international border with Mexico that have been formally designated as lacking critical infrastructure. Most are unincorporated. Doña Ana County contains 37 such *colonias* (Illustration #2).

Missing or inadequate infrastructure includes paved roads, domestic water supply, sewer systems, flood protection, and public facilities. These conditions adversely impact the health and quality of life in *colonias*—especially of low-income families, the elderly and children.

Substandard conditions impede public safety, discourage economic investment, and limit job opportunities. Inadequate wastewater systems increase the risk of aquifer contamination, and insufficient storm-water systems expose entire communities to catastrophic loss.

The County's 5-year Infrastructure Capital Improvement Plan (ICIP) is often used as a measure of this need. In fact, projects included in the 2019-2023 ICIP address less than 7% of the work needed to bring these communities up to standard.

Current estimates indicate that the cost for all necessary infrastructure improvements for which Doña Ana County government is directly responsible is more than half a billion dollars.

COUNTY INFRASTRUCTURE NEEDED IN COLONIAS

| | |
|-------------------------|--------------------------------|
| County Roads | \$ 81 million |
| Dam Repair & Upgrade | \$216 million (± \$24 million) |
| New Drainage Structures | \$133 million |
| Public Facilities | \$113 million |
| Wastewater System | \$ 34 million |
| Professional Services | \$ 29 million (5%) |
| Total Estimate | \$606 million |



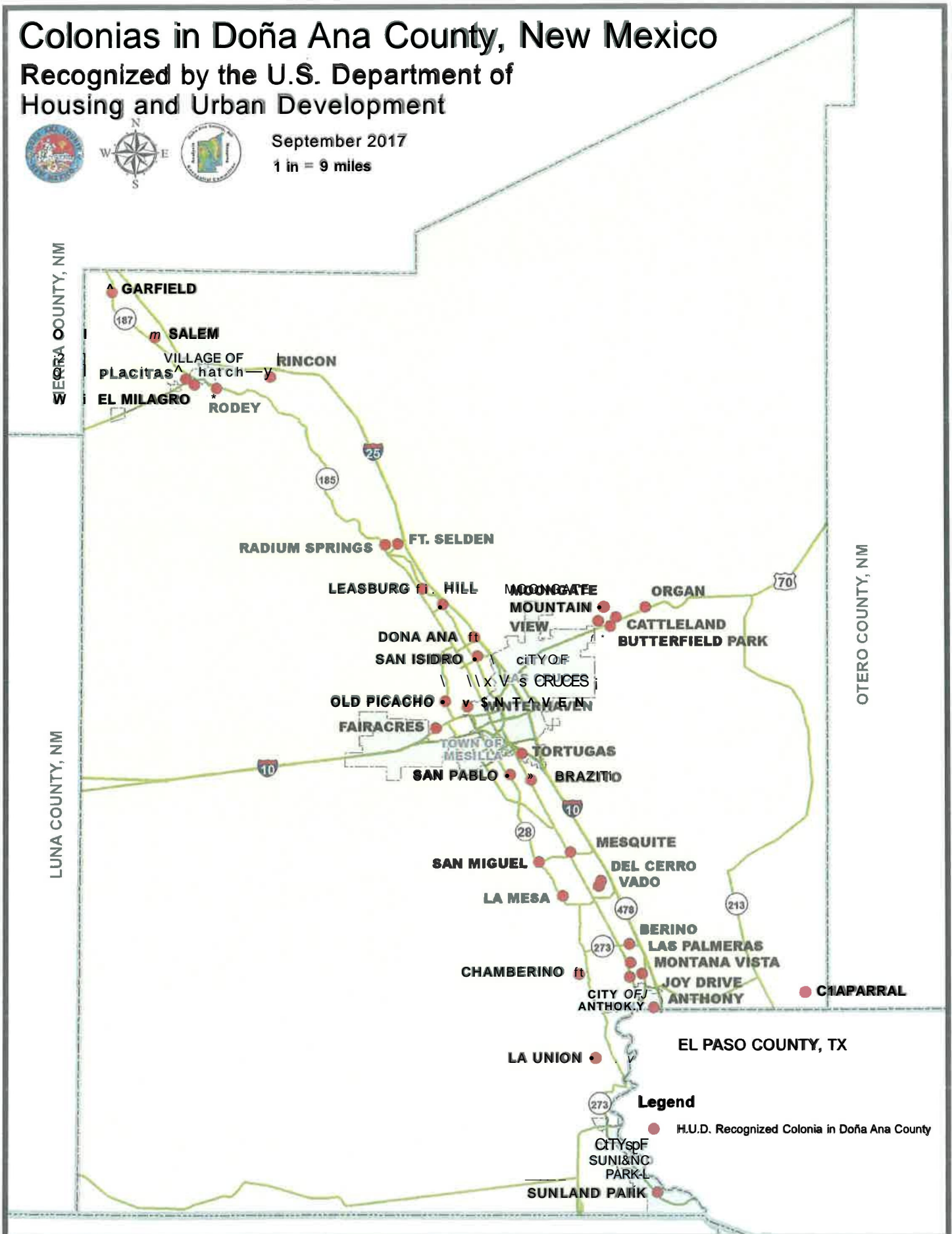
Colonias in Doña Ana County, New Mexico

Recognized by the U.S. Department of Housing and Urban Development



September 2017

1 in = 9 miles



FEDERAL FUNDING

Most current federal funding involves loans that the County is challenged to repay and that county residents cannot afford. Some programs, such as through the Corp of Engineers, also impose cost-to-benefit requirements that do not fit the low population density and low-income levels associated with *colonias*.

FINANCIAL CHALLENGES

The current level of capital investment in *colonias* is grossly insufficient if these communities are to be made fully functional. The problem is intensified by modest population growth and associated demands on essential infrastructure.

In addition, according to the anti-donation clause in the New Mexico State Constitution, public funding cannot be used to improve deteriorated private roads that are common throughout *colonias* and are a major source of public concern.

Without major changes in the amounts of available funding—including expanded support for the professional services needed to properly design and oversee construction projects—government will have failed to carry out its fundamental obligation towards the residents of *colonias*, especially those living on low-incomes.

INFRASTRUCTURE SYSTEMS

The following section provides a brief overview of infrastructure systems in colonias for which Doña Ana County government is responsible. Each thumbnail sketch seeks to convey the scope of the issue as well as a reasonable cost estimate to complete all of the necessary work. Details are provided for the highest priority projects on the 2019-2023 ICIP list. (See: https://www.donaanacounty.org/colonias_infrastructure_report/)

COUNTY ROADS

The County is responsible for approximately 1,324 miles of road throughout its jurisdiction. Of these, 554 are paved and 770 are unpaved (Appendix B). There are also approximately 963 miles of private roads that are not maintained by the County: 240 are unpaved and 723 are paved.

One hundred forty-four (144) miles of unpaved roads are located within the *colonias* of Doña Ana County. The County is responsible for maintenance of slightly less than half of these unpaved roads.

APPENDIX A

INFRASTRUCTURE CAPITAL IMPROVEMENT PLAN (ICIP)

- **2019-2023 ICIP List**
- **Project Summaries**

DONA ANA COUNTY 2019-2023 INFRASTRUCTURE CAPITAL IMPROVEMENT PLAN
COLONIAS PROJECTS ONLY

| Colurr PROJECT | 2019 REQUEST | TOTAL COST | DEPARTMENT |
|--|---------------------|---------------------|---------------------|
| 1 Dragonfly Channel | \$1,680,800 | \$8,404,000 | Flood Commission |
| 2 Brahman Dam | \$2,125,000 | \$3,625,000 | Flood Commission |
| 3 Dona Ana Fire Substation Remodel/Expansion | \$500,000 | \$500,000 | Fire Administration |
| 4 Chaparral Wastewater Phase 1C | \$920,685 | \$3,189,685 | Utilities |
| 5 Hill Area Drainage Plan | \$125,000 | \$300,000 | Flood Commission |
| 6 Placitas Arroyo | \$500,000 | \$4,500,000 | Flood Commission |
| 7 Anthony Fire Station Remodel | \$800,000 | \$800,000 | Fire Administration |
| 8 South Central WW Treatment Plant Improvements | \$280,000 | \$3,625,000 | Utilities |
| 9 South Central WW Collection Improvements | \$175,000 | \$1,625,000 | Utilities |
| 10 County Fire Stations Exhaust Removal System | \$450,000 | \$450,000 | Fire Administration |
| 11 Vado WW Project -- Sleepy Farms | \$400,000 | \$3,400,000 | Utilities |
| 12 Chaparral Substation Renovations | \$600,000 | \$600,000 | Sheriff |
| 13 Radium Springs Drainage Master Plan | \$100,000 | \$100,000 | Flood Commission |
| 14 La Union Road | \$130,267 | \$130,267 | Engineering |
| 15 Organ Roads | \$223,414 | \$670,242 | Engineering |
| 16 Chaparral Drive | \$350,000 | \$350,000 | Engineering |
| 17 Butler Heights Road | \$188,065 | \$188,065 | Engineering |
| 18 Warthen Road | \$550,000 | \$550,000 | Engineering |
| 19 Butterfield Blvd. | \$50,000 | \$670,000 | Engineering |
| 20 Flower Road | \$126,625 | \$597,625 | Engineering |
| 21 Tornillo Flats Drive | \$252,959 | \$252,959 | Engineering |
| 22 County ADA Improvements | \$100,000 | \$100,000 | Facilities & Parks |
| 23 Higgins Lane | \$50,000 | \$665,000 | Engineering |
| 24 Montes Road | \$378,025 | \$378,025 | Engineering |
| 25 Salome Hernandez Road | \$125,000 | \$125,000 | Engineering |
| 26 Hasse Road | \$355,254 | \$355,254 | Engineering |
| 27 Nike Avenue | \$20,000 | \$195,000 | Engineering |
| 28 Gabaldon Road | \$125,000 | \$125,000 | Engineering |
| 29 McCombs Road-Hermosa Improvements | \$125,000 | \$250,000 | Engineering |
| 30 Berino Park Playground Improvements | \$100,000 | \$100,000 | Facilities & Parks |
| 31 Zeus Avenue | \$15,000 | \$165,000 | Engineering |
| 32 Security Cameras for Park Facilities | \$87,200 | \$87,200 | Sheriff |
| 33 Found Avenue | \$14,000 | \$134,000 | Engineering |
| 34 Mesquite Ballpark Lighting Replacement | \$275,000 | \$275,000 | Facilities & Parks |
| 35 Dolores Wright Ballpark Lighting Improvements | \$187,000 | \$374,000 | Facilities & Parks |
| 36 South Valley Complex Renovations | \$100,000 | \$100,000 | Facilities & Parks |
| 37 Charoláis Road | \$117,929 | \$117,929 | Engineering |
| 38 Betty McKnight Community Center Renovations | \$100,000 | \$100,000 | Facilities & Parks |
| 39 Desert Aire Drive | \$171,208 | \$171,208 | Engineering |
| 40 Mustang Road/Bridge at Franco | \$776,693 | \$776,693 | Engineering |
| 41 Sal Si Puedes Neighborhood Access | \$125,000 | \$125,000 | Engineering |
| 42 Mesilla View-Chaparral Roads | \$521,905 | \$521,905 | Engineering |
| 43 La Union Sidewalks Construction | \$120,000 | \$120,000 | Engineering |
| | \$14,517,029 | \$39,889,057 | |

This list represents the 43 projects in Colonias areas. The projects are listed in prioritized order, however, it is not the complete Dona Ana County ICIP List.

| Project Name | Request Amount | Commission District |
|-------------------------|---------------------------|--------------------------------|
|-------------------------|---------------------------|--------------------------------|

2019-2023 ICIP COLONIAS PROJECT SUMMARIES

| Project Name | Request Amount | Commission District |
|-------------------------|---------------------------|--------------------------------|
|-------------------------|---------------------------|--------------------------------|

- | | | |
|-----------------------------|-------------------------------|----------|
| 1) Dragonfly Channel | \$1,680,800 Phase I | 4 |
| | \$7,232,000 Phase II-V | |

Scope of Work: To design and construct an outfall channel for the Brahman Dam that will route drainage waters to an area known as Isaacks Lake. Phase I consists of plan and design and construction. Phase II-V Consists of construction.

This project is an outfall channel for the Brahman Dam. The channel will route drainage waters to an area known as Isaacks Lake. This project can be constructed in multi-phases and by multi-year funding. The Brahman Dam and Dragonfly Channel are key elements to the East Mesa Master Drainage Plan. These facilities will be the backbone of future flood control facilities and need to be constructed prior to most other major flood control facilities in the area. Improved drainage in the area will reduce flood complaints from private property owners, reduce road maintenance and improve access for residents and emergency vehicles.

- | | | |
|-----------------------|--------------------------------|----------|
| 2) Brahman Dam | \$2,125,000 Phase I | 4 |
| | \$1,500,000 Phase II-IV | |

Scope of Work: To design and construct a flood control dam that ties into the northern end of an existing channel known as the Dragonfly Channel.

This project is an earthen flood control dam that ties into the northern end of an existing channel known as the Dragonfly Channel. The Brahman Dam and Dragonfly Channel are key elements to the East Mesa Master Drainage Plan and will be the backbone of future flood control facilities. They need to be constructed prior to most other major flood control facilities in the area. Improved drainage in the area will reduce flood complaints from private property owners, reduce road maintenance and improve access for residents and emergency vehicles.

- | | | |
|---|------------------|----------|
| 3) Doña Ana Fire Station Remodel/Expansion | \$550,000 | 5 |
|---|------------------|----------|

Scope of Work: To plan, design and construct renovations to include the addition of dorm rooms, upgrades to living/day rooms and a classroom area at the Doña Ana Fire Station in Doña Ana County.

The project will include renovations to provide for a more efficient fire station to house around-the-clock staff. This will improve response times to the residents of the County, while providing better living space for the firefighters.

- | | | |
|--|--------------------|----------|
| 4) Chaparral Waste Water Project Phase 1C | \$1,221,000 | 2 |
|--|--------------------|----------|

Scope of Work: To Construct Phase 1C of the Chaparral Wastewater Project.

This phase will include approximately 13,000 l.f. of gravity collection line, a duplex lift station, and approximately 4,700 l.f. of force main. Also planned is improvements to lift station #9 and the addition of a mechanical bar screen in the entrance works channel at the Waste

| Project Name | Request Amount | Commission District |
|--|--|----------------------------|
| Water Treatment Plant. This will provide service approximately 200 residents. Land has been acquired for the lift station. | | |
| 5) Hill Area Drainage Plan | \$125,000 (Phase I) Plan and Design \$175,000 (Phase II) Construction | 4 |
| Scope of Work: To plan, design and construct stormwater and drainage improvements in the Hill area, north of Doña Ana, New Mexico. | | |
| The project will determine the source and amount of localized flooding, design projects to alleviate the flooding and construct the proposed projects. Improved drainage in the area will reduce flood complains from private property owners, reduce road maintenance and improve access for residents and emergency vehicles. | | |
| 6) Placitas Arroyo | \$500,000 Phase I (Design) \$4,000,000 Phase II (Construction) | 5 |
| Scope of Work: Reconstruction to Canal Road crossing the Placitas Arroyo to improve drainage over the existing concrete culverts along West Canal Road in the Village of Hatch. Project will also consist of widening and improving the critical section from the crossing at HWY 26 to the crossing at HWY 187. | | |
| Project reduces risk of flooding from 100 year flood event. Project is essential for protection of entire community (current capacity is 2-5 year storm events) from events similar to the 2006 flood. There is a high level of public interest from other agencies including the Water Trust Board, Army Corps of Engineers and the New Mexico legislature. | | |
| The Placitas Arroyo was the major flooding source in the 2006 flooding of the Village of Hatch. The project will provide much needed flood protection to local home owners, business population, as well as infrastructure, and will free up County road crews to clean up in other areas of the county after a storm event. | | |
| 7) Anthony Fire Station Remodel | \$ 800,000 | 5 |
| Scope of Work: To design and construct/complete remodel/expansion to include the addition of dorm rooms, upgrades to living/day rooms and pave the parking lot and driving area at the Anthony Fire Station in Doña Ana County. | | |
| The project will include renovations to provide for a more efficient fire station to house around-the-clock staff. This will improve response times to the residents of the County, while providing better living space for the firefighters. | | |
| 8) South Central W/W Treatment Plant Improvements | \$1,625,000 Phase I \$2,000,000 Phase II | 1,2 |
| Scope of Work: To plan, assess, design and construct Phase 1 and Phase 2 improvements to the County's South Central Wastewater Treatment Plant. | | |

| Project Name | Request Amount | Commission District |
|--|------------------------------------|----------------------------|
| <p>Facility requires upgrade activities to repair structural components and increase processing capacity. Project will protect infrastructure and ensure that remaining 10-year design of life of facility is met and potentially extend remaining service life to 15 years. Project will improve efficiency. Project is currently running below capacity (50%). Project will accommodate future flows from Mesquite and Brazito, scheduled for near term. Reduced operation costs estimated at \$40,000.</p> <p>Project will extend the life of the a major wastewater treatment plant by 10 years, reduce the overall maintenance and operation costs of the system over its expected life and significantly reduce the risk of failure of an essential public utility for Southern Doña Ana County communities.</p> | | |
| 9) South Central WW Collection Improvements | | 1,2 |
| | \$ 625,000 Phase I (Design) | |
| | \$1,000,000 | |
| <p>Scope of Work: To plan, initiate an asset management plan, design and construct improvements and upgrades to the existing collection system in the South Central Region.</p> <p>Facility originally built in 2004 – expected service life of facility is 10-20 years; waste water system serves largest service area for Doña Ana County. Memorandum of Agreement with Lower Rio Grande Public Water Works Authority- taking flow from Mesquite and Brazito systems. Flow likely not to be supported by systematic assessment but rather by staff (visible) assessment. Project will increase life expectancy by 5-8 years for lift stations; existing wastewater plant is at 30-40% capacity. Project will reduce risk of breakdown of lift stations and failure of manhole covers. Project will reduce operating expense.</p> <p>Project will extend the life of system lift stations by a maximum of 8-10 years, prevent costly line breaks and failure of manhole infrastructure thus improving the reliability and operation of an essential public utility as its service area expands in Southern Doña Ana County.</p> | | |
| 10) County Fire Stations Exhaust Removal System | | ALL |
| | \$450,000 | |
| <p>Scope of Work: To plan, Design, and Install Exhaust Removal Systems throughout the eighteen (18) county fire stations countywide.</p> <p>Promote a healthy working environment, minimizing the amount of exhaust and diesel fumes that firefighters are exposed to while working at the stations. The currently increasing call volume, or demand for service countywide, has firefighters being exposed to the fumes and diesel exhaust on a more frequent basis.</p> | | |
| 11) Vado Wastewater Project – Sleepy Farms Design | | 1 |
| | \$ 400,000 | |
| <p>Scope of Work: To plan, design, acquire and construct Wastewater Collection and lift stations for the area of Sleepy Farms, Vado, NM.</p> | | |

| Project Name | Request Amount | Commission District |
|--|------------------|---------------------|
| The residents of Sleepy Farms are experiencing septic, cesspool and leech field failures. This study will determine the ability to connect residents to the County's system. | | |
| 12) Sheriff's Chaparral Substation Renovations | \$600,000 | 5 |
| <p>Scope of Work: To equip, install, plan, design and construct improvements to the Chaparral Sheriff's Substation, including HVAC, parking lot and landscape in Doña Ana County.</p> <p>This project will include construction of a secure, paved parking area, xeriscape landscaping, lighting upgrades, interior and exterior paint, replace and upgrade windows and upgrade HVAC system.</p> | | |
| 13) Radium Springs Drainage Master Plan \$ 100,000 | | 5 |
| <p>Scope of Work: To develop a Drainage Master Plan for the unincorporated community of Radium Springs in Doña Ana County.</p> <p>This project will determine the source and amount of localized flooding. The plan will identify capital projects to alleviate the flooding. Improved drainage in the area will reduce flood complaints from private property owners, reduce road maintenance and improve access for residents and emergency vehicles. The capital projects identified in the Drainage Master Plan will provide the much needed flood protection to local home owners, business population, as well as infrastructure, and will free up County road crews to clean up in other areas of the county after a storm event.</p> | | |
| 14) La Union Avenue | \$130,267 | 1L |
| <p>Scope of Work: To design, reconstruct and drainage improvements of a county road in the community of La Union NM.</p> <p>The project will include the construction of La Union Ave. Items included will be; 6 inches of sub grade preparation, 6 inches of base course, and 2 inches of HMA as well as header curb. The existing roadway is a dirt road that services many residents along this street. This project will be completed in one phase. Phase I starting on the east end of La Union Ave. approximately 1250 feet to the intersection of Semenario Street.</p> | | |
| 15) Organ Roads | \$223,414 | 4L |
| <p>Scope of Work: The project includes construction of 2nd Street, 3rd Street and Furnace Street. These Streets combined are approximately 4850 LF in length. Construction items include; 6 inches of sub grade preparation, 6 inches of base course, and 2 inches of HMA as well as type "C" rollover curb.</p> <p>The goals and objectives achieved with this project are primarily, providing safe and efficient conveyance of vehicular and pedestrian traffic, while providing separation of both and conveying storm water flows to reduce erosion and flood susceptibility to the adjoining properties and roadway features.</p> | | |

| Project Name | Request Amount | Commission District |
|---|--|----------------------------|
| 16) Chaparral Drive | \$ 350,000 | 2 |
| <p>Scope of Work: To pave Chaparral Drive which will include planning, engineering, construction, final inspection, and one year warranty inspection.</p> <p>Planning: Initial Survey of roadway and public meetings. Engineering: Put the planning to a plan set and sent out to construction. Construction: Pave the unpaved sections of the roadway. Final Inspection: Inspect the final product from the contractor. Warranty inspection: One year after final inspection the County will go back with the contractor and re-inspect the project for any defects.</p> | | |
| 17) Butler Heights Road | \$188,065 | 2 |
| <p>Scope of Work: To design and construct a paved road in the community of Chaparral NM and also to aid in drainage improvements.</p> <p>The project will design and construct a paved road in the community of Chaparral NM and also to aid in drainage improvements. Roads will consist of 2" asphalt on 6" base course upgrade.</p> | | |
| 18) Warthen Road | \$550,000 | 1 |
| <p>Scope of Work: To plan, design, acquire rights-of-way and construct County roads.</p> <p>The project will improve Warthen Road and drainage issues by reducing erosion and flood risk.</p> | | |
| 19) Butterfield Blvd. | \$50,000 (Phase I) Design \$310,000 (Phase II) Partial Construction \$310,000 (Phase III) Remaining Construction | 4 |
| <p>Scope of Work: To plan, design, acquire rights-of-way and construct a road within the Butterfield Park Community in Doña Ana County.</p> <p>The project is aimed to protect area residents susceptible to overland storm water flooding due to existing roadway conditions. The project will provide access and edge of pavement fraying control with inclusion of curb and gutter. Issues to be addressed by this project include providing overland storm water runoff and flooding control, edge of pavement preservation, access control and safer, vertically separated pedestrian access.</p> | | |
| 20) Flower Road | \$597,625 | 1 |
| <p>Scope of Work: To plan, survey, design and construct and drainage improvements on Flower Road in Doña Ana County.</p> <p>The project will construct 2,100 feet of Flower Road from Swanack Road bearing north to the intersection with Calle de la Cruz. Construction items to include 2.5" asphalt pavement, 6" base course, sub-grade shaping and compaction, curb and gutter, and an 18" storm drain improvements. This roadway connects two Colonias Communities, shall eliminate recurring flooding, and shall improve vehicle and pedestrian traffic through the roadway.</p> | | |
| 21) Tornillo Flats Drive | \$ 252,959 | 2 |

| Project Name | Request Amount | Commission District |
|--|--|----------------------------|
| <p>Scope of Work: To design and construct a paved road in the community of Chaparral NM and also to aid in drainage improvements</p> <p>The proposed completion of the project will improve access for residents as well as other commuters who travel on these streets in the Chaparral area. The proposed asphalt surface will provide a safer and more reliable roadway that will improve the quality of life for area residents.</p> | | |
| 22) ADA Improvements | \$ 100,000 | ALL |
| <p>Scope of Work: To Plan, design, construct and make ADA improvements to county owned buildings, parks and grounds</p> <p>To comply with the State and Federal Americans with Disabilities Act, includes new sidewalks, improving parking, replacing landing surfaces, improving/replacing doors and hardware, replacing signage.</p> | | |
| 23) Higgins Lane | \$ 50,000 (Phase I) Design/Environmental \$307,500 (Phase II) Partial Construction \$307,500 (Phase III) Remaining Construction | 4 |
| <p>Scope of Work: To plan, design, acquire rights-of-way and construct Higgins Lane in Doña Ana County.</p> <p>Higgins Lane roadway reconstruction project aimed to protect area residents susceptible to overland storm water flooding due to existing roadway conditions. The project will provide access and edge of pavement fraying control, with inclusion of curb and gutter. Issues to be addressed by this project include providing overland storm water runoff and flooding control, edge of pavement preservation, access control and safer, vertically separated pedestrian access.</p> | | |
| 24) Montes Road | \$ 378,023 | 41 |
| <p>Scope of Work: To plan, engineer, construct and pave Montes Road/Cover EBID Junctions in Doña Ana County.</p> <p>The project will improve the current roadway and ditch banks which are very narrow along this section of the road, which will improve safety for drivers and reduce the potential of a ditch bank collapse.</p> | | |
| 25) Salome Hernandez Road | \$ 125,000 | 2 |
| <p>Scope of Work: To plan, design and pave Salome Hernandez in Doña Ana County.</p> <p>The project will plan, design and pave Salome Hernandez Road, which is approximately 430 LF in length. Items included will be; 6 inches of sub grade preparation, 8 inches of base course, and 3 inches of HMAAC.</p> | | |

| Project Name | Request Amount | Commission District |
|--|---|----------------------------|
| 26) Haase Road | \$ 355,254 | 2 |
| <p>Scope of Work: To plan, design and pave Haase Road in Doña Ana County.</p> <p>The project will plan, design and pave Haase Road, which is approximately 3,096 LF in length. Items included will be; 6 inches of sub grade preparation, 6 inches of base course, and 2 inches of HMAc.</p> | | |
| 27) Nike Avenue | \$ 20,000 (Phase I) Design, Environmental, Cultural \$ 175,000 (Phase II) Construction | 4 |
| <p>Scope of Work: To plan, design and pave Gabaldon Street in Doña Ana County.</p> <p>Nike Avenue is a reconstruction project aimed to protect area residents susceptible to overland storm water flooding due to existing roadway conditions, while providing access and edge of pavement fraying control with inclusion of curb and gutter. Project activities include; providing overland storm water runoff and flooding control, edge of pavement preservation, access control and safer and vertically separated pedestrian access. The existing roadway will be milled and recycled to construct the pedestrian access way.</p> | | |
| 28) Gabaldon Street | \$ 125,000 | 2 |
| <p>Scope of Work: To plan, design, acquire rights-of-way and construct Nike Avenue in Butterfield in Doña Ana County.</p> <p>To plan, design and pave Gabaldon Street, which is approximately 2,300 LF in length. Items included will be; 6 inches of sub grade preparation, 6 inches of base course, and 1.5 inches of HMAc.</p> | | |
| 29) McCombs Road/Hermosa Improvements | \$125,000 | 2 |
| <p>Scope of Work: To plan, design and reconstruct the intersection of McCombs Road and Hermosa in Doña Ana County.</p> <p>This project will improve access safety, delineate roadway from adjacent land uses, improve travel and turning movement safety and improve economic development opportunities.</p> | | |
| 30) Berino Park Improvements | \$ 100,000 | 1 |
| <p>Scope of Work: To plan, design and construct improvements to Berino Park in Doña Ana County.</p> <p>The project will upgrade the playground equipment to certain certifications and sustainability. The upgrades to the Berino park will provide adequate usage for the community, current park utilizes and event holders and generate more usage throughout the year to create a safe environment this would applied to sustaining the grounds and</p> | | |

| Project Name | Request Amount | Commission District |
|-------------------------|---------------------------|--------------------------------|
|-------------------------|---------------------------|--------------------------------|

infrastructure at the park. All upgrades will be a long term investment for Dona Ana County parks and its long term operations.

- 31) Zeus Avenue** **\$ 15,000 Design, Environmental, Cultural** **4**
\$150,000 (Phase II) Construction

Scope of Work: To plan, design, acquire rights-of-way and construct Zeus Avenue in Doña Ana County.

The initial project is for design of the Zeus Avenue project is a reconstruction project aimed to protect area residents susceptible to overland storm water flooding due to existing roadway conditions. The project will provide access and edge of pavement fraying control with inclusion of curb and gutter. Issues to be addressed by this project include providing overland storm water runoff and flooding control, edge of pavement preservation, access control and safer, vertically separated pedestrian access.

- 32) Security Cameras in Park Facilities** **\$ 87,200** **3 & 4**

Scope of Work: To plan, purchase and install surveillance camera equipment for additional public safety in parks and facilities in Doña Ana County.

There has been an increase of criminal activity on and near the Dolores Wright Park in Chaparral, NM and the Butterfield Community Center in Organ, NM, to include graffiti and vandalism. The Sheriff's Department believes that cameras and surveillance equipment could decrease the likelihood of such events and aid in the investigation and prosecution of crimes in these areas.

- 33) Found Avenue** **\$ 14,000 (Phase I) Design** **4**
\$ 120,000 (Phase II) Construction

Scope of Work: To plan, design, acquire rights-of-way and construct Found Avenue in Doña Ana County.

The initial phase of this project includes design and environmental clearance for Found Avenue. This reconstruction project is aimed to protect area residents susceptible to overland storm water flooding due to existing roadway conditions, while providing access and edge of pavement fraying control, with inclusion of curb and gutter.

- 34) Mesquite Ballpark Lighting Replacement** **\$ 275,000** **11**

Scope of Work: To plan, design and construct the replacement of the Mesquite Ballpark lighting in Doña Ana County.

The project will upgrade the baseball lighting that has been in place for thirty years. By replacing the existing lighting, energy and maintenance costs will be reduced. There should also be a decrease in risk of harm to the public.

- 35) Dolores Wright Park Lighting** **\$ 374,000** **2**

| Project Name | Request Amount | Commission District |
|--|-----------------------|----------------------------|
| <p>Scope of Work: To plan, design, replace, upgrade, purchase and install the skate park improvements at the Dolores Wright Park in Chaparral in Doña Ana County.</p> <p>The project will replace and upgrade the current skate park which is 18 years old and outdated. The skate park is heavily used by the community and has become dangerously deteriorated.</p> | | |
| 36) South Valley Complex Renovations | \$100,000 | 1 |
| <p>Scope of Work: To plan, design and construct renovations, upgrades, improvements and repairs to the South Valley Complex in Anthony, NM.</p> <p>The repairs will eliminate further deterioration, will alleviate major leaks currently taking place and will sustain the life and usage of the building in which will help the general public from injury or harm.</p> | | |
| 37) Charolais Road | \$117,929 | 4 |
| <p>Scope of Work: To plan, engineer, construction and final inspection of Charolais Road in Doña Ana County.</p> <p>Proposed project will pave Charolais Road from Bataan Memorial west to Longhorn Drive. Project will reduce the cost required with the constant maintenance of an unpaved road. Reduce fugitive dust in the area. Provide an improvement in the quality of life in the area.</p> | | |
| 38) Betty McKnight Community Center | \$100,000 | 5 |
| <p>Scope of Work: To plan, design and construct renovations, upgrades, improvements and repairs to the Betty McKnight Community Center.</p> <p>To plan, design and construct renovations, upgrades, improvements and repairs to the Betty McKnight Community Center. Renovations, upgrades, improvements and repairs will address several issues regarding the aging of the building. Structural damage has occurred over the years, especially the roof. A re-roof is necessary to keep the building from leaking. The leaks have caused damage throughout the building and have caused the ceiling to collapse in some areas posing a hazard and danger for the occupants in the building.</p> | | |
| 39) Desert Aire Drive | \$ 171,208 | 2 |
| <p>Scope of Work: To survey and plan construction of Desert Aire Drive in Chaparral in Doña Ana County.</p> <p>This project will begin in Phase I with surveying and planning to construct a paved road in Chaparral. The paved road will reduce costs associated with maintaining a dirt road, reduce dust in the area and improve the quality of life of the residents.</p> | | |
| 40) Mustang Road/Bridge at Franco | \$776,692 | 1 |
| <p>Scope of Work: To plan, engineer and construct Mustang Road in Vado in Doña Ana County.</p> | | |

| Project Name | Request Amount | Commission District |
|-------------------------|---------------------------|--------------------------------|
|-------------------------|---------------------------|--------------------------------|

Proposed project will pave Mustang Road from Franco Road to the Cul de Sac near the end of Mustang Road. Completion of the project will help reduce the cost required with the constant maintenance of an unpaved road. Project will reduce fugitive dust in the area and provide an improvement in the quality of life in the area.

41) Sal Si Puedes Neighborhood Access \$ 125,000 1

Scope of Work: To access survey and corridor study to help aid in planning and designing of a new access to the neighborhood in the community of Vado in Doña Ana County.

The project will provide a corridor study of the area and will allow Doña Ana County to decide on actions that will need to be taken to improve the access to the neighborhood and make it safer and more reliable for the residents.

42) Mesilla View-Chaparral Roads \$521,905 2

Scope of Work: To plan, engineer, construct and pave Mesilla View Road in Chaparral in Doña Ana County.

This project will pave Mesilla View road from Greenwood to McCombs Road (4,350 linear feet of pavement). Project will reduce the cost required with the constant maintenance of an unpaved road. Project will reduce fugitive dust in the area and thus provide an improvement in the quality of life in the area.

43) La Union Sidewalks Construction \$ 100,000 2

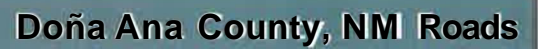
Scope of Work: To design, reconstruction and drainage improvements of a county road in the community of La Union NM.

The project will include the construction of La Union Ave. Items included will be; 6 inches of sub grade preparation, 6 inches of base course, and 2 inches of HMA as well as header curb. The existing roadway is a dirt road that services many residents along this street. This project will be completed in one phase. Phase I starting on the east end of La Union Ave. approximately 1250 feet to the intersection of Sentenario Street.

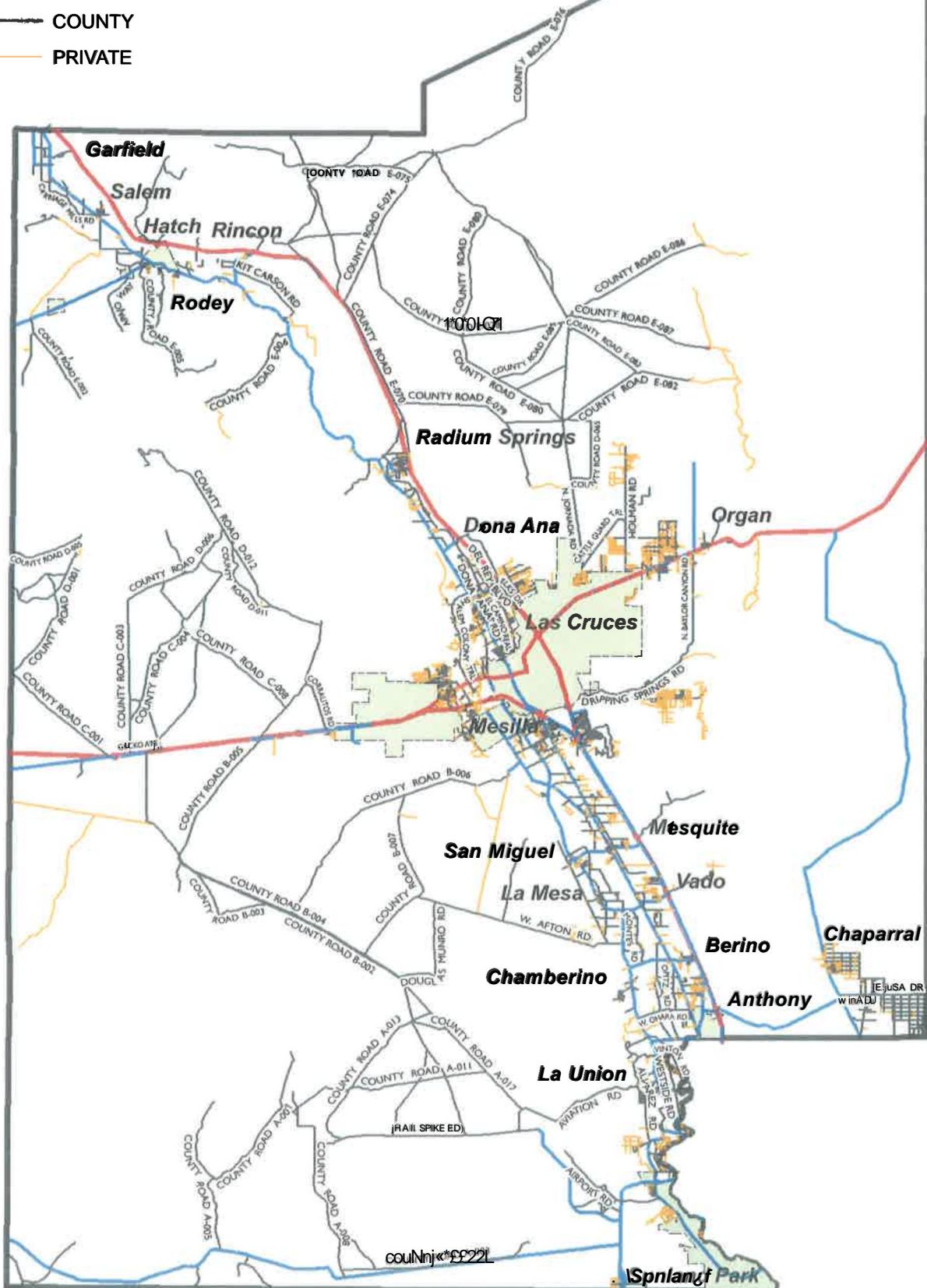
APPENDIX B

ROADS & HIGHWAYS OF DOÑA ANA COUNTY

- **ROADS Map**
- **INVENTORY OF COLONIA ROADS**



- **INTERSTATE**
— **STATE**
— **COUNTY**
— **PRIVATE**



| Colonia Planning Area | Street Name | Maintained by | Surface | Length in Feet | | | | |
|-----------------------|---------------------|---------------|---------|----------------|-------------|----------|--------------|-----------|
| Berino | AERO LN | COUNTY | PAVED | 1311.17 | County (If) | | Private (If) | |
| | ALEJO LN | COUNTY | PAVED | 710.73 | 32,608.88 | | 21,367.88 | |
| | BLUESTEM DR | COUNTY | PAVED | 1423.74 | Paved | Unpaved | Paved | Unpaved |
| | CADENA ST | COUNTY | PAVED | 1146.22 | 30,734.22 | 1,874.66 | 0.00 | 21,367.88 |
| | CALLE AL RUMBO | PRIVATE | UNPAVED | 3738.48 | | | | |
| | CAMINO SIN BUELTA | PRIVATE | UNPAVED | 1659.44 | | | | |
| | CANDELARIA ST | COUNTY | PAVED | 1154.22 | | | | |
| | CANDELARIA ST | PRIVATE | UNPAVED | 156.25 | | | | |
| | CONCEPCION AVE | COUNTY | PAVED | 2353.56 | | | | |
| | CONCEPCION AVE | PRIVATE | UNPAVED | 224.63 | | | | |
| | CONTRERAS ST | COUNTY | PAVED | 711.81 | | | | |
| | CORKSCREW ST | COUNTY | PAVED | 306.78 | | | | |
| | DROPSEED LN | COUNTY | PAVED | 710.75 | | | | |
| | E. SIX MILE RD | PRIVATE | UNPAVED | 3070.48 | | | | |
| | FEATHERGRASS LN | COUNTY | PAVED | 937.50 | | | | |
| | FUEGO AVE | COUNTY | PAVED | 303.83 | | | | |
| | GUILLEN AVE | PRIVATE | UNPAVED | 764.23 | | | | |
| | GUILLERMO RD | PRIVATE | UNPAVED | 2325.94 | | | | |
| | GUILLERMO RD | COUNTY | PAVED | 183.14 | | | | |
| | HARDING RD | COUNTY | PAVED | 202.76 | | | | |
| | ISLA VISTA AVE | PRIVATE | UNPAVED | 807.20 | | | | |
| | LLUVIA ST | COUNTY | PAVED | 996.02 | | | | |
| | McANALLY AVE | COUNTY | PAVED | 2576.68 | | | | |
| | MOGOLLON ST | COUNTY | PAVED | 306.10 | | | | |
| | OPITZ RD | COUNTY | PAVED | 2307.36 | | | | |
| | OTERO ST | COUNTY | UNPAVED | 158.55 | | | | |
| | OTERO ST | COUNTY | PAVED | 1136.81 | | | | |
| | PARQUE AVE | COUNTY | PAVED | 2996.68 | | | | |
| | PICO LN | COUNTY | PAVED | 943.98 | | | | |
| | PIPO LN | PRIVATE | UNPAVED | 490.53 | | | | |
| | PLUME ST | COUNTY | PAVED | 1019.17 | | | | |
| | PRIVADA AVE | PRIVATE | UNPAVED | 790.52 | | | | |
| | PULIS RD | PRIVATE | UNPAVED | 1483.47 | | | | |
| | RIO LN | COUNTY | PAVED | 526.20 | | | | |
| | RISTRA ST | COUNTY | PAVED | 1141.37 | | | | |
| | RISTRA ST | PRIVATE | UNPAVED | 147.61 | | | | |
| | SALTBUSH DR | COUNTY | PAVED | 1502.72 | | | | |
| | SAN BENITO ST | COUNTY | PAVED | 1305.78 | | | | |
| | THOMPSON ST | COUNTY | UNPAVED | 1550.08 | | | | |
| | THOMPSON ST | COUNTY | PAVED | 1161.38 | | | | |
| | VARGAS ST | COUNTY | UNPAVED | 166.02 | | | | |
| | VARGAS ST | COUNTY | PAVED | 1133.76 | | | | |
| | VISTOSO LP | PRIVATE | UNPAVED | 5709.11 | | | | |
| | W. SIX MILE RD | COUNTY | PAVED | 224.04 | | | | |
| | | | | | | | | |
| Brazito | ANGIE LN | PRIVATE | UNPAVED | 702.36 | County (If) | | Private (If) | |
| | ARCO PL | PRIVATE | UNPAVED | 734.07 | 17,835.95 | | 22,830.86 | |
| | ARTESIA CT | PRIVATE | UNPAVED | 607.17 | Paved | Unpaved | Paved | Unpaved |
| | BAR-B-QUE RD | COUNTY | PAVED | 1073.39 | 13,987.47 | 3,848.48 | 0.00 | 22,830.86 |
| | BLUET LN | PRIVATE | UNPAVED | 860.05 | | | | |
| | BOSQUE FARMS CT | PRIVATE | UNPAVED | 412.13 | | | | |
| | CALLE DE BRAZITO | COUNTY | PAVED | 2636.36 | | | | |
| | CALLE DE BRAZITO | PRIVATE | UNPAVED | 1296.14 | | | | |
| | CARLSBAD CT | PRIVATE | UNPAVED | 502.32 | | | | |
| | CLOVIS RD | PRIVATE | UNPAVED | 1911.20 | | | | |
| | EAST SIDE CANAL RD | COUNTY | UNPAVED | 542.01 | | | | |
| | ESTRELLITA CT | PRIVATE | UNPAVED | 587.03 | | | | |
| | HARPER RD | COUNTY | PAVED | 4026.52 | | | | |
| | HOBBS RD | PRIVATE | UNPAVED | 937.81 | | | | |
| | MISSIONARY RIDGE RD | COUNTY | UNPAVED | 2040.01 | | | | |
| | MISSIONARY RIDGE RD | PRIVATE | UNPAVED | 1620.34 | | | | |
| | ONNIES ACRES RD | COUNTY | UNPAVED | 89.15 | | | | |

| | | | | | | | | | |
|-------------|--------------------|---------|---------|---------|-------------|----------|--------------|-----------|--|
| | PECANDEROSA CT | PRIVATE | UNPAVED | 294.06 | | | | | |
| | PICNIC CT | PRIVATE | UNPAVED | 298.14 | | | | | |
| | PURE WATER RD | PRIVATE | UNPAVED | 27.03 | | | | | |
| | RAGING BULL PL | PRIVATE | UNPAVED | 986.47 | | | | | |
| | ROSWELL ST | PRIVATE | UNPAVED | 1564.78 | | | | | |
| | SATEVO PL | PRIVATE | UNPAVED | 368.94 | | | | | |
| | SOCCORO RD | PRIVATE | UNPAVED | 443.08 | | | | | |
| | STONE DR | PRIVATE | UNPAVED | 1120.68 | | | | | |
| | TEAK LN | PRIVATE | UNPAVED | 1856.03 | | | | | |
| | TEAK TIMBER RD | PRIVATE | UNPAVED | 609.80 | | | | | |
| | TEAK WOOD RD | PRIVATE | UNPAVED | 1150.20 | | | | | |
| | TECTONA RD | PRIVATE | UNPAVED | 687.93 | | | | | |
| | VERVAIN RD | PRIVATE | UNPAVED | 709.32 | | | | | |
| | YUCCA RD | COUNTY | UNPAVED | 1177.32 | | | | | |
| | YUCCA RD | COUNTY | PAVED | 6251.21 | | | | | |
| | YUCCA RD | PRIVATE | UNPAVED | 1861.06 | | | | | |
| | ZULE PL | PRIVATE | UNPAVED | 682.74 | | | | | |
| | | | | | | | | | |
| Butterfield | ANTONITO RD | PRIVATE | UNPAVED | 679.07 | County (lf) | | Private (lf) | | |
| | BALSAM RD | COUNTY | PAVED | 791.04 | 28,598.17 | | 4,921.62 | | |
| | BALSAM RD | PRIVATE | UNPAVED | 28.08 | Paved | Unpaved | Paved | Unpaved | |
| | BERRY PATCH LANE | COUNTY | PAVED | 3067.82 | 23,316.22 | 5,281.95 | 0.00 | 4,921.62 | |
| | BERRY PATCH LANE | PRIVATE | UNPAVED | 2144.72 | | | | | |
| | BUTTERFIELD BLVD | COUNTY | PAVED | 4025.33 | | | | | |
| | BUTTONWILLOW PL | PRIVATE | UNPAVED | 24.17 | | | | | |
| | CIRCUIT LN | PRIVATE | UNPAVED | 1531.73 | | | | | |
| | DESERT PARK AVE | COUNTY | PAVED | 2871.88 | | | | | |
| | EASON LN | COUNTY | PAVED | 36.11 | | | | | |
| | EASY LN | COUNTY | UNPAVED | 2958.31 | | | | | |
| | EASY LN | PRIVATE | UNPAVED | 513.85 | | | | | |
| | FOUND AVE | COUNTY | PAVED | 601.47 | | | | | |
| | HIGGINS LN | COUNTY | PAVED | 3247.98 | | | | | |
| | HOLSOME RD | COUNTY | PAVED | 530.20 | | | | | |
| | ISAACKS AVE | COUNTY | PAVED | 2080.51 | | | | | |
| | LARIMER LN | COUNTY | PAVED | 2516.32 | | | | | |
| | MISSILE LN | COUNTY | UNPAVED | 1233.15 | | | | | |
| | NIKE AVE | COUNTY | PAVED | 904.96 | | | | | |
| | PAETZ LN | COUNTY | UNPAVED | 1090.49 | | | | | |
| | WILDFLOWER ST | COUNTY | PAVED | 1889.81 | | | | | |
| | ZEUS AVE | COUNTY | PAVED | 752.78 | | | | | |
| | | | | | | | | | |
| Cattleland | ABERDEEN ANGUS WAY | COUNTY | UNPAVED | 1358.44 | County (lf) | | Private (lf) | | |
| | ANTARES ST | PRIVATE | UNPAVED | 1073.57 | 12,875.92 | | 10,256.33 | | |
| | CHALLENGER PL | PRIVATE | UNPAVED | 2836.77 | Paved | Unpaved | Paved | Unpaved | |
| | CHAROLAIS DR | COUNTY | UNPAVED | 1058.95 | 6,853.12 | 6,022.80 | 0.00 | 10,256.33 | |
| | COMET ST | PRIVATE | UNPAVED | 1100.65 | | | | | |
| | LONGHORN DR | COUNTY | PAVED | 3668.28 | | | | | |
| | MOONGATE RD | COUNTY | PAVED | 3184.83 | | | | | |
| | ORION ST | PRIVATE | UNPAVED | 1095.27 | | | | | |
| | PLUTO ST | PRIVATE | UNPAVED | 1136.72 | | | | | |
| | POLARIS ST | PRIVATE | UNPAVED | 1093.24 | | | | | |
| | RIGEL ST | PRIVATE | UNPAVED | 1115.87 | | | | | |
| | SANTA GERTRUDIS DR | COUNTY | UNPAVED | 1647.28 | | | | | |
| | SHORTHORN DR | COUNTY | UNPAVED | 1958.13 | | | | | |
| | SIRIUS ST | PRIVATE | UNPAVED | 804.24 | | | | | |
| | | | | | | | | | |
| Chamberino | CALLE BAMBU | PRIVATE | UNPAVED | 410.49 | County (lf) | | Private (lf) | | |
| | CEMETARY ST | COUNTY | PAVED | 354.52 | 29,565.27 | | 3,510.83 | | |
| | CONVENT ST | COUNTY | PAVED | 1007.62 | Paved | Unpaved | Paved | Unpaved | |
| | E. PROVENCIO RD | COUNTY | PAVED | 1122.04 | 24,741.39 | 4,823.88 | 0.00 | 3,510.83 | |
| | KILI RD | PRIVATE | UNPAVED | 744.85 | | | | | |
| | LARA RD | COUNTY | PAVED | 1248.29 | | | | | |
| | MONTE ALTO ST | COUNTY | PAVED | 1058.75 | | | | | |

| | | | |
|--------------------------|---------|---------|---------|
| N. LOPEZ RD | COUNTY | PAVED | 334.59 |
| N. MEDINA RD | COUNTY | PAVED | 730.90 |
| N. SAN LUIS AVE | COUNTY | PAVED | 715.53 |
| N. SAUCEDO AVE | COUNTY | PAVED | 558.89 |
| PADRE PIO AVE | COUNTY | PAVED | 772.41 |
| S. LOPEZ RD | COUNTY | UNPAVED | 1202.75 |
| S. LOPEZ RD | COUNTY | PAVED | 1706.55 |
| S. MEDINA RD | COUNTY | PAVED | 2054.54 |
| S. PEREA RD | COUNTY | UNPAVED | 524.30 |
| S. PEREA RD | COUNTY | PAVED | 1492.01 |
| S. PEREA RD | PRIVATE | UNPAVED | 287.99 |
| S. SAN LUIS AVE | COUNTY | PAVED | 1691.79 |
| S. SAN LUIS AVE | PRIVATE | UNPAVED | 164.03 |
| S. SAUCEDO AVE | COUNTY | PAVED | 729.31 |
| SAN BERNARDO ST | COUNTY | PAVED | 1014.27 |
| SAN FARA AVE | COUNTY | PAVED | 311.22 |
| SAN FRANCISCO DE ASIS ST | COUNTY | PAVED | 3154.13 |
| SAN GABRIEL RD | PRIVATE | UNPAVED | 983.24 |
| SAN JACINTO RD | COUNTY | PAVED | 4115.88 |
| SAN JOAQUIN ST | COUNTY | PAVED | 336.31 |
| TEQUILA LN | COUNTY | UNPAVED | 910.89 |
| THREE D FARM RD | PRIVATE | UNPAVED | 920.23 |
| VIA IGLESIA | COUNTY | PAVED | 231.85 |
| W. PROVENCIO RD | COUNTY | UNPAVED | 2185.94 |

Chaparral

| | | | |
|--------------------|---------|---------|----------|
| ADRIAN RD | PRIVATE | UNPAVED | 1322.59 |
| ALEXANDER LN | COUNTY | PAVED | 1319.46 |
| ALTA VISTA DR | PRIVATE | UNPAVED | 4628.47 |
| ALTOS DR | COUNTY | UNPAVED | 1822.29 |
| AMPAIRO RD | COUNTY | UNPAVED | 5477.65 |
| AMPAIRO RD | COUNTY | PAVED | 7877.04 |
| AMPAIRO RD | PRIVATE | PAVED | 680.91 |
| ANGIES DREAM LN | COUNTY | UNPAVED | 763.98 |
| ATLAS ST | PRIVATE | UNPAVED | 4112.30 |
| AUTUMN SAGE LN | COUNTY | UNPAVED | 4170.96 |
| BALD EAGLE CT | COUNTY | PAVED | 480.69 |
| BARBIE LN | COUNTY | UNPAVED | 3601.91 |
| BRISTLE GRASS DR | COUNTY | UNPAVED | 431.27 |
| BUENOS DIAS CT | PRIVATE | UNPAVED | 1135.06 |
| BUSHI CT | PRIVATE | UNPAVED | 398.88 |
| BUTLER HEIGHTS RD | COUNTY | UNPAVED | 2624.99 |
| BYRUM RD | COUNTY | UNPAVED | 10519.98 |
| CAP ROCK CT | PRIVATE | UNPAVED | 526.75 |
| CAPITAL DR | PRIVATE | UNPAVED | 1947.97 |
| CAROL LN | COUNTY | PAVED | 1118.73 |
| CATCLAW PL | PRIVATE | PAVED | 475.27 |
| CENTERLINE DR | COUNTY | UNPAVED | 2630.32 |
| CHAPARRAL DR | COUNTY | UNPAVED | 7889.46 |
| CLOUDVIEW RD | COUNTY | PAVED | 990.92 |
| COLES RD | COUNTY | UNPAVED | 6587.76 |
| COLES RD | COUNTY | PAVED | 1291.24 |
| COUNTY LINE DR | COUNTY | PAVED | 16593.03 |
| COUNTY ROAD A-074 | COUNTY | UNPAVED | 8272.63 |
| CYNTHIA LN | COUNTY | UNPAVED | 1332.87 |
| DE LARA ESTATES RD | COUNTY | UNPAVED | 8262.69 |
| DE LARA ESTATES RD | COUNTY | PAVED | 5366.97 |
| DEER GRASS LN | COUNTY | UNPAVED | 1453.93 |
| DENALI DR | COUNTY | UNPAVED | 2181.13 |
| DESERT AIRE DR | COUNTY | UNPAVED | 5246.08 |
| DESERT AIRE DR | COUNTY | PAVED | 4303.79 |
| DREAM WALKER WAY | PRIVATE | UNPAVED | 629.20 |
| E. LISA DR | COUNTY | PAVED | 15820.44 |
| E. WICKER RD | COUNTY | UNPAVED | 2614.06 |

| County (If) | | Private (If) | |
|-------------|------------|--------------|-----------|
| 418,052.14 | | 73,209.44 | |
| Paved | Unpaved | Paved | Unpaved |
| 231,843.72 | 186,208.42 | 2,823.69 | 70,385.75 |

| | | | |
|----------------------|---------|---------|----------|
| EDNA DR | COUNTY | PAVED | 5263.69 |
| EL CAPITAN DR | PRIVATE | UNPAVED | 1798.95 |
| ENCHANTMENT DR | PRIVATE | UNPAVED | 2555.29 |
| FINLEY ST | COUNTY | UNPAVED | 5285.53 |
| FINLEY ST | COUNTY | PAVED | 2649.80 |
| GALA WAY | PRIVATE | PAVED | 675.39 |
| GLORIETA DR | PRIVATE | UNPAVED | 1436.90 |
| GOLDEN EAGLE ST | COUNTY | PAVED | 5267.00 |
| GOLDEN SUN DR | COUNTY | UNPAVED | 2515.73 |
| GRAMMA GRASS LN | COUNTY | UNPAVED | 837.46 |
| GREEN RIVER LP | PRIVATE | UNPAVED | 2714.02 |
| GREEN TREE LP | PRIVATE | UNPAVED | 3799.99 |
| GREENWOOD RD | COUNTY | UNPAVED | 3887.10 |
| GREENWOOD RD | PRIVATE | UNPAVED | 1367.19 |
| HACKBERRY CT | PRIVATE | PAVED | 554.48 |
| HALF DOME ROAD | PRIVATE | UNPAVED | 818.99 |
| HENDRICH RD | COUNTY | UNPAVED | 2622.85 |
| HERMOSA DR | COUNTY | PAVED | 10532.51 |
| HIDALGO PL | PRIVATE | UNPAVED | 367.65 |
| HOP I ST | PRIVATE | UNPAVED | 3970.92 |
| HOT PEPPERS RD | COUNTY | UNPAVED | 6561.72 |
| HOT PEPPERS RD | COUNTY | PAVED | 3928.81 |
| HUECO ST | PRIVATE | UNPAVED | 5233.76 |
| INDIGO LN | COUNTY | UNPAVED | 1259.65 |
| IRON HORSE AVE | PRIVATE | UNPAVED | 1780.32 |
| JAVELINA ST | COUNTY | UNPAVED | 5237.79 |
| JEANNE LN | COUNTY | UNPAVED | 1004.37 |
| KATYDID LN | COUNTY | UNPAVED | 1072.23 |
| LISA GT | PRIVATE | UNPAVED | 465.61 |
| LORRAINE LN | COUNTY | UNPAVED | 1830.10 |
| LUMINOUS LN | COUNTY | PAVED | 792.11 |
| LUNA AZUL RD | COUNTY | UNPAVED | 3304.54 |
| LUNA AZUL RD | COUNTY | PAVED | 9909.95 |
| MAGUEY ST | COUNTY | UNPAVED | 567.19 |
| MCCOMBS RD | COUNTY | PAVED | 13373.89 |
| McLAIN RD | COUNTY | UNPAVED | 2621.76 |
| MESILLA VIEW DR | COUNTY | UNPAVED | 4291.79 |
| MESILLA VIEW DR | COUNTY | PAVED | 9908.47 |
| MIAMI DR | PRIVATE | UNPAVED | 1785.12 |
| MISSILE DR | PRIVATE | UNPAVED | 5416.77 |
| MOONVIEW LN | COUNTY | PAVED | 2317.00 |
| NIKE AIR RD | COUNTY | UNPAVED | 1319.42 |
| OASIS DR | COUNTY | UNPAVED | 4006.60 |
| OASIS DR | COUNTY | PAVED | 5908.96 |
| OLD LAREDO RD | COUNTY | PAVED | 3584.12 |
| OLD SEQUOIA RD | COUNTY | UNPAVED | 3939.12 |
| OLD SEQUOIA RD | PRIVATE | UNPAVED | 114.01 |
| PALMAS ST | COUNTY | UNPAVED | 5239.04 |
| PALOMA BLANCA DR | COUNTY | UNPAVED | 1009.12 |
| PALOMA BLANCA DR | COUNTY | PAVED | 13193.76 |
| PAMPAS GRASS LN | COUNTY | UNPAVED | 761.79 |
| PASEO REAL DR | COUNTY | UNPAVED | 633.56 |
| PASEO REAL DR | COUNTY | PAVED | 9921.82 |
| PASEO REAL DR | PRIVATE | UNPAVED | 2128.42 |
| PIÑOS ALTOS ST | PRIVATE | UNPAVED | 1127.93 |
| PIRESCOTT ANTHONY DR | COUNTY | UNPAVED | 7910.77 |
| PIRESCOTT ANTHONY DR | COUNTY | PAVED | 4989.68 |
| QUIET PINE DR | COUNTY | UNPAVED | 1309.13 |
| QUITMAN RD | COUNTY | UNPAVED | 10806.45 |
| RED RIVER DR | COUNTY | PAVED | 2586.77 |
| RED RIVER DR | PRIVATE | UNPAVED | 501.40 |
| RED SUN DR | COUNTY | PAVED | 627.57 |
| REDSTONE ST | COUNTY | UNPAVED | 3512.07 |

| | | | |
|-------------------|---------|---------|----------|
| REGALA WAY | COUNTY | PAVED | 2627.01 |
| RICEGRASS DR | PRIVATE | UNPAVED | 1339.50 |
| RIM ROCK DR | PRIVATE | UNPAVED | 1713.71 |
| ROCKY MOUNTAIN RD | COUNTY | PAVED | 2592.82 |
| ROSE LN | PRIVATE | UNPAVED | 1478.01 |
| RUBY CT | PRIVATE | UNPAVED | 381.96 |
| RUBY RD | COUNTY | PAVED | 3549.67 |
| SAGEWOOD DR | COUNTY | PAVED | 5273.47 |
| SALSA ST | COUNTY | UNPAVED | 6613.12 |
| SALSA ST | PRIVATE | UNPAVED | 1283.57 |
| SAN CARLOS ST | COUNTY | UNPAVED | 5835.75 |
| SAN CARLOS ST | COUNTY | PAVED | 5274.88 |
| SAND DUNES WAY | COUNTY | PAVED | 2395.30 |
| SANDS DR | COUNTY | PAVED | 3003.98 |
| SANDS DR | PRIVATE | UNPAVED | 803.32 |
| SCHNEBERGER RD | COUNTY | UNPAVED | 1514.76 |
| SCHNEBERGER RD | COUNTY | PAVED | 1286.92 |
| SHAMROCK CT | PRIVATE | PAVED | 437.64 |
| SHIPROCK RD | COUNTY | PAVED | 6592.86 |
| SHIRLEY LN | COUNTY | UNPAVED | 3886.79 |
| STATE LINE DR | COUNTY | PAVED | 9833.44 |
| SUNNYSANDS RD | COUNTY | PAVED | 5269.12 |
| TOMAHAWK CT | PRIVATE | UNPAVED | 409.45 |
| TORNILLO FLATS DR | COUNTY | UNPAVED | 6778.55 |
| TORREON CT | PRIVATE | UNPAVED | 939.04 |
| TUMBLEWEED CT | PRIVATE | UNPAVED | 539.30 |
| TUMBLEWEED TRL | COUNTY | PAVED | 5607.36 |
| TUNA ST | COUNTY | UNPAVED | 866.69 |
| UNNAMED RD | PRIVATE | UNPAVED | 3957.71 |
| W. LISA DR | COUNTY | PAVED | 11378.02 |
| W. WICKER RD | COUNTY | PAVED | 5311.27 |
| W. WICKER RD | PRIVATE | UNPAVED | 4689.27 |
| WAGON MOUND RD | COUNTY | UNPAVED | 1481.90 |
| WAGON TRAIL RD | COUNTY | PAVED | 1929.39 |
| WHEATSTONE DR | PRIVATE | UNPAVED | 766.48 |

City of Anthony

| | | | |
|---------------------|---------|---------|---------|
| BIGHORN ST | PRIVATE | UNPAVED | 27.29 |
| E. OHARA RD | COUNTY | PAVED | 3884.36 |
| GAZELLE CT | PRIVATE | UNPAVED | 22.03 |
| LIPPS RD | PRIVATE | UNPAVED | 20.35 |
| MATHIS RD | COUNTY | PAVED | 200.60 |
| MIL ACRES ST | PRIVATE | UNPAVED | 1519.48 |
| VENADITO TRL | PRIVATE | UNPAVED | 15.21 |
| W. OHARARD | COUNTY | PAVED | 486.92 |
| WHISPERING DOVE AVE | COUNTY | PAVED | 245.23 |

City of Sunland Park

| | | | |
|---------------------|---------|-------|---------|
| BORDERLAND RD | COUNTY | PAVED | 1167.69 |
| CASAS LINDAS LN | COUNTY | PAVED | 70.37 |
| COMMERCIANTIES BLVD | PRIVATE | PAVED | 2598.41 |
| COUNTRY CLUB RD | PRIVATE | PAVED | 57.60 |
| EDGE MONT RD | COUNTY | PAVED | 77.15 |
| KILLDEER RD | COUNTY | PAVED | 64.87 |

Del Cerro

| | | | |
|------------------|---------|---------|---------|
| ARMERIA LN | PRIVATE | UNPAVED | 353.48 |
| CALLE DE LA CRUZ | COUNTY | PAVED | 1539.49 |
| CRISTO AVE | COUNTY | PAVED | 1945.69 |
| FERN CT | PRIVATE | UNPAVED | 427.24 |
| FLOWER RD | PRIVATE | UNPAVED | 2130.00 |
| LA FE AVE | COUNTY | PAVED | 2825.87 |
| ULY WAY | PRIVATE | UNPAVED | 693.46 |
| LIRIO LN | PRIVATE | UNPAVED | 437.16 |
| LOMAS AVE | COUNTY | PAVED | 2308.06 |
| MORO LN | PRIVATE | UNPAVED | 712.68 |

| County (If) | | Private (If) | |
|-------------|---------|--------------|----------|
| 4,817.12 | | 1,604.35 | |
| Paved | Unpaved | Paved | Unpaved |
| 4,817.12 | 0.00 | 0.00 | 1,604.35 |

| County (If) | | Private (If) | |
|-------------|---------|--------------|---------|
| 1,380.09 | | 2,656.01 | |
| Paved | Unpaved | Paved | Unpaved |
| 1,380.09 | 0.00 | 2,656.01 | 0.00 |

| County (If) | | Private (If) | |
|-------------|---------|--------------|----------|
| 17,646.13 | | 9,485.70 | |
| Paved | Unpaved | Paved | Unpaved |
| 17,646.13 | 0.00 | 0.00 | 9,485.70 |

| | | | | | | | | | |
|------------|-----------------------|---------|---------|---------|-------------|----------|--------------|-----------|--|
| | OJITO AVE | COUNTY | PAVED | 740.90 | | | | | |
| | ORCHID WAY | PRIVATE | UNPAVED | 649.95 | | | | | |
| | PALMILLA AVE | COUNTY | PAVED | 1921.82 | | | | | |
| | PAZ GARCIA CT | PRIVATE | UNPAVED | 340.61 | | | | | |
| | PLAZA AVE | COUNTY | PAVED | 1149.18 | | | | | |
| | POPPY CT | PRIVATE | UNPAVED | 319.23 | | | | | |
| | SANTOLINA LN | PRIVATE | UNPAVED | 342.81 | | | | | |
| | SINGH RD | PRIVATE | UNPAVED | 2036.26 | | | | | |
| | SWANNACK RD | COUNTY | PAVED | 5215.11 | | | | | |
| | THORN WAY | PRIVATE | UNPAVED | 342.14 | | | | | |
| | WILD ROSE WAY | PRIVATE | UNPAVED | 700.67 | | | | | |
| | | | | | | | | | |
| Dona Ana | ABEYTA RD | COUNTY | PAVED | 2487.92 | County (lf) | | Private (lf) | | |
| | ABEYTA RD | COUNTY | UNPAVED | 802.54 | 37,312.36 | | 1,935.42 | | |
| | ALGODON CT | PRIVATE | UNPAVED | 273.68 | Paved | Unpaved | Paved | Unpaved | |
| | ARMADILLO LN | PRIVATE | UNPAVED | 17.79 | 36,047.64 | 1,264.73 | 0.00 | 1,935.42 | |
| | BARELA DR | COUNTY | PAVED | 3181.86 | | | | | |
| | CONROY TRL | PRIVATE | UNPAVED | 250.18 | | | | | |
| | COUNTY ROAD D-108 | COUNTY | PAVED | 957.09 | | | | | |
| | CRISTO REY ST | COUNTY | PAVED | 582.88 | | | | | |
| | CRISTO REY ST | PRIVATE | UNPAVED | 285.17 | | | | | |
| | DE LA O DR | COUNTY | UNPAVED | 462.19 | | | | | |
| | DE LA O DR | COUNTY | PAVED | 838.06 | | | | | |
| | DUSTY LN | COUNTY | PAVED | 1508.61 | | | | | |
| | E. DONA ANA SCHOOL RD | COUNTY | PAVED | 1230.53 | | | | | |
| | EL CAMINO REAL | COUNTY | PAVED | 3018.35 | | | | | |
| | EL TORITO LN | COUNTY | PAVED | 456.62 | | | | | |
| | ELKS DR | COUNTY | PAVED | 1189.98 | | | | | |
| | FLORES CT | PRIVATE | UNPAVED | 624.41 | | | | | |
| | GARCIA DR | COUNTY | PAVED | 3238.29 | | | | | |
| | GARY LEE LN | PRIVATE | UNPAVED | 377.50 | | | | | |
| | ISAAC GARCIA RD | COUNTY | PAVED | 1004.72 | | | | | |
| | JOE GUTIERREZ ST | COUNTY | PAVED | 2528.79 | | | | | |
| | JOE GUTIERREZ ST | PRIVATE | UNPAVED | 93.69 | | | | | |
| | LEDESMA DR | COUNTY | PAVED | 4241.55 | | | | | |
| | MISTY WAY | PRIVATE | UNPAVED | 13.00 | | | | | |
| | PEDRO MADRID RD | COUNTY | PAVED | 2070.89 | | | | | |
| | ROMERO DR | COUNTY | PAVED | 1843.19 | | | | | |
| | TANAHILL DR | COUNTY | PAVED | 822.05 | | | | | |
| | UNNAMED RD | COUNTY | PAVED | 3.47 | | | | | |
| | VANEGAS CT | COUNTY | PAVED | 778.31 | | | | | |
| | VANEGAS DR | COUNTY | PAVED | 3047.82 | | | | | |
| | W. DONA ANA SCHOOL RD | COUNTY | PAVED | 118.24 | | | | | |
| | WERTHIEM AVE | COUNTY | PAVED | 898.41 | | | | | |
| | | | | | | | | | |
| El Milagro | CHONTE AVE | COUNTY | PAVED | 2881.80 | County (lf) | | Private (lf) | | |
| | RECUERDOS RD | COUNTY | UNPAVED | 1532.08 | 6,013.94 | | 1,486.91 | | |
| | RECUERDOS RD | COUNTY | PAVED | 504.28 | Paved | Unpaved | Paved | Unpaved | |
| | RUSBAYO ST | PRIVATE | UNPAVED | 640.63 | 4,481.86 | 1,532.08 | 0.00 | 1,486.91 | |
| | TEPACHE ST | COUNTY | PAVED | 1095.77 | | | | | |
| | TREBOL AVE | PRIVATE | UNPAVED | 846.28 | | | | | |
| | | | | | | | | | |
| Fairacres | ALOE VERA LN | PRIVATE | PAVED | 404.74 | County (lf) | | Private (lf) | | |
| | CLARK LN | COUNTY | PAVED | 1890.79 | 32,000.99 | | 21,610.28 | | |
| | CLARK LN | PRIVATE | UNPAVED | 2355.58 | Paved | Unpaved | Paved | Unpaved | |
| | CLIFF LN | COUNTY | PAVED | 648.89 | 31,038.67 | 962.32 | 8,777.54 | 12,832.74 | |
| | CLIFF LN | PRIVATE | UNPAVED | 260.42 | | | | | |
| | CYPRESS HILL | PRIVATE | UNPAVED | 644.56 | | | | | |
| | DERBY AVE | COUNTY | PAVED | 2643.46 | | | | | |
| | DESERT VALLEY CT | PRIVATE | PAVED | 331.53 | | | | | |
| | DRY CANYON RD | PRIVATE | PAVED | 698.00 | | | | | |
| | DUSTY PRINTS RD | PRIVATE | PAVED | 2457.66 | | | | | |
| | DUSTY PRINTS RD | PRIVATE | UNPAVED | 1545.76 | | | | | |
| | | | | | | | | | |

| | | | |
|------------------|---------|---------|---------|
| ACOSTER LN | COUNTY | PAVED | 646.72 |
| FREESE LN | COUNTY | PAVED | 487.81 |
| HILLCREST AVE | COUNTY | PAVED | 661.96 |
| HILLCREST AVE | PRIVATE | UNPAVED | 1331.84 |
| HILLTOP AVE | COUNTY | PAVED | 668.40 |
| LA QUINTA ST | COUNTY | PAVED | 76.07 |
| LARK SPUR CT | PRIVATE | PAVED | 254.22 |
| LARK SPUR WAY | PRIVATE | PAVED | 2221.65 |
| LINDA VISTA RD | COUNTY | PAVED | 1333.21 |
| LONESOME RD | COUNTY | UNPAVED | 962.32 |
| LOOKOUT VIEW PL | PRIVATE | PAVED | 293.86 |
| LOYA LN | COUNTY | PAVED | 1087.12 |
| MARWOOD LN | PRIVATE | UNPAVED | 443.83 |
| MILLER RD | COUNTY | PAVED | 649.97 |
| MILLER RD | PRIVATE | UNPAVED | 1219.69 |
| MORTON LN | COUNTY | PAVED | 4079.91 |
| MOTOR LN | PRIVATE | UNPAVED | 291.73 |
| QUESENBERRY LN | COUNTY | PAVED | 4020.17 |
| QUESENBERRY LN | PRIVATE | UNPAVED | 1151.28 |
| RAINBOW RIDGE ST | COUNTY | PAVED | 1985.80 |
| RED WOLF LN | PRIVATE | UNPAVED | 1375.98 |
| RUBY HILLS CT | PRIVATE | UNPAVED | 263.73 |
| S. WEINREICH RD | COUNTY | PAVED | 3032.34 |
| SANDY HILL DR | COUNTY | PAVED | 1964.87 |
| SHAKESPEARE LN | PRIVATE | UNPAVED | 939.78 |
| SPIRIT RIDGE CT | COUNTY | PAVED | 876.82 |
| SUNFISH CT | PRIVATE | UNPAVED | 38.11 |
| SUNSET VIEW PL | PRIVATE | PAVED | 204.22 |
| SUPREME CT | PRIVATE | UNPAVED | 970.46 |
| TINGO CIR | PRIVATE | PAVED | 1911.67 |
| TOWNVIEW LN | COUNTY | PAVED | 745.89 |
| VISTA REAL DR | COUNTY | PAVED | 1321.95 |
| WEINREICH RD | COUNTY | PAVED | 2216.52 |

Fort Selden

| | | | |
|--------------------|---------|---------|---------|
| BLAZING TRAILS RD | PRIVATE | UNPAVED | 1984.54 |
| BUFFALO ESTATES RD | COUNTY | PAVED | 2719.60 |
| CAMP CODY TRL | COUNTY | PAVED | 504.95 |
| CARR LN | PRIVATE | UNPAVED | 1368.43 |
| CAVALRY TRL | PRIVATE | UNPAVED | 757.67 |
| DANIEL CT | PRIVATE | UNPAVED | 698.38 |
| DANIEL CT | COUNTY | PAVED | 493.80 |
| DE BEERS DR | COUNTY | PAVED | 4063.06 |
| DESERT EDGE RD | COUNTY | PAVED | 4007.03 |
| DONA ANA RD | COUNTY | PAVED | 923.54 |
| FORT CUMMINGS RD | COUNTY | PAVED | 2527.23 |
| FORT FURLONG TRL | COUNTY | PAVED | 724.64 |
| FORT MARCY TRL | COUNTY | PAVED | 1242.04 |
| FORT MCLANE RD | COUNTY | PAVED | 3084.65 |
| FORT McRAE RD | COUNTY | PAVED | 1898.88 |
| FORT THORN RD | COUNTY | PAVED | 963.79 |
| FRODO PL | COUNTY | UNPAVED | 4223.21 |
| HURT RD | COUNTY | UNPAVED | 3685.63 |
| INDIAN TRAILS RD | PRIVATE | UNPAVED | 2814.43 |
| KALVIN PL | COUNTY | PAVED | 427.85 |
| L. B. LINDBECK RD | COUNTY | PAVED | 2526.61 |
| LEASBURG DAM RD | COUNTY | PAVED | 2370.43 |
| MEADOR DR | COUNTY | UNPAVED | 4615.86 |
| NACHAS PL | PRIVATE | PAVED | 401.94 |
| OUTPOST LN | PRIVATE | UNPAVED | 803.63 |
| ROBLEDO VISTA RD | COUNTY | PAVED | 5245.30 |
| SCOUT LN | COUNTY | PAVED | 581.03 |
| SHARRON Q. LN | PRIVATE | UNPAVED | 1564.71 |
| SOLDIER CT | COUNTY | PAVED | 440.67 |

| County (If) | | Private (If) | |
|-------------|-----------|--------------|-----------|
| 52,622.72 | | 13,010.80 | |
| Paved | Unpaved | Paved | Unpaved |
| 35,376.25 | 17,246.47 | 1,153.66 | 11,857.14 |

| | | | | | | | | | |
|-----------|---------------------|---------|---------|----------|--|-------------|-----------|--------------|----------|
| | SOUTH TRACK TRL | COUNTY | UNPAVED | 2900.49 | | | | | |
| | SUNRISE VISTA RD | PRIVATE | UNPAVED | 326.02 | | | | | |
| | TEL HIGH RD | COUNTY | UNPAVED | 1821.29 | | | | | |
| | TRES AMIGOS RD | PRIVATE | PAVED | 751.71 | | | | | |
| | TRES AMIGOS RD | PRIVATE | UNPAVED | 1539.33 | | | | | |
| | WARRIOR LN | COUNTY | PAVED | 631.14 | | | | | |
| | | | | | | | | | |
| Garfield | DANDELION AVE | COUNTY | UNPAVED | 1233.31 | | County (lf) | | Private (lf) | |
| | LOMA PARDA RD | COUNTY | PAVED | 1274.25 | | 8,128.70 | | 0.00 | |
| | NIGHTWATCHERS RD | COUNTY | PAVED | 1706.87 | | Paved | Unpaved | Paved | Unpaved |
| | RIO VIEJO RD | COUNTY | PAVED | 3914.28 | | 6,895.40 | 1,233.31 | 0.00 | 0.00 |
| | | | | | | | | | |
| Hill | DONA ANA RD | COUNTY | PAVED | 4428.92 | | County (lf) | | Private (lf) | |
| | GOAT HILL RD | COUNTY | PAVED | 643.80 | | 5,072.72 | | 0.00 | |
| | | | | | | Paved | Unpaved | Paved | Unpaved |
| | | | | | | 5,072.72 | 0.00 | 0.00 | 0.00 |
| | | | | | | | | | |
| Joy Drive | ALDAZ RD | COUNTY | PAVED | 1943.14 | | County (lf) | | Private (lf) | |
| | BURLESON RD | PRIVATE | PAVED | 1252.65 | | 17,390.08 | | 9,270.64 | |
| | DREAMS DR | PRIVATE | UNPAVED | 2786.69 | | Paved | Unpaved | Paved | Unpaved |
| | ELFEGO RD | PRIVATE | UNPAVED | 457.45 | | 17,390.08 | 0.00 | 1,252.65 | 8,018.00 |
| | OPITZ RD | COUNTY | PAVED | 7609.01 | | | | | |
| | OUR WAY RD | PRIVATE | UNPAVED | 1808.22 | | | | | |
| | PAR TWO LN | PRIVATE | UNPAVED | 1599.46 | | | | | |
| | QUARTERHORSE RD | PRIVATE | UNPAVED | 1366.18 | | | | | |
| | W. JOY DR | COUNTY | PAVED | 4684.63 | | | | | |
| | W. OHARA RD | COUNTY | PAVED | 3153.30 | | | | | |
| | | | | | | | | | |
| La Mesa | ARCHER FARM RD | COUNTY | PAVED | 6246.80 | | County (lf) | | Private (lf) | |
| | BUTTERCUP LN | COUNTY | UNPAVED | 1260.82 | | 72,120.68 | | 3,439.06 | |
| | CALLE DE TONANTZIN | PRIVATE | UNPAVED | 765.98 | | Paved | Unpaved | Paved | Unpaved |
| | CASTILLO RD | COUNTY | PAVED | 74.51 | | 52,539.38 | 19,581.30 | 0.00 | 3,439.06 |
| | CHIMURI ST | COUNTY | PAVED | 1187.29 | | | | | |
| | COUNTY ROAD B-010 | COUNTY | UNPAVED | 11335.10 | | | | | |
| | DAWKINS RD | PRIVATE | UNPAVED | 25.36 | | | | | |
| | E. BELLMAN AVE | COUNTY | PAVED | 1191.86 | | | | | |
| | E. CHOPE'S ST | COUNTY | PAVED | 1193.01 | | | | | |
| | E. CORPENING AVE | COUNTY | PAVED | 1188.01 | | | | | |
| | E. JOSEPHINE ST | COUNTY | PAVED | 1183.79 | | | | | |
| | E. SAN MIGUEL ST | COUNTY | PAVED | 1183.23 | | | | | |
| | E. SAN MIGUEL ST | PRIVATE | UNPAVED | 338.34 | | | | | |
| | ESSLINGER RD | COUNTY | UNPAVED | 3777.81 | | | | | |
| | ESSLINGER RD | COUNTY | PAVED | 4256.75 | | | | | |
| | EVARO DR | PRIVATE | UNPAVED | 245.35 | | | | | |
| | FLORIDA AVE | COUNTY | PAVED | 1190.60 | | | | | |
| | FLORIDA AVE | PRIVATE | UNPAVED | 338.62 | | | | | |
| | GAVILAN AVE | COUNTY | PAVED | 3485.72 | | | | | |
| | HARLACKER RD | COUNTY | PAVED | 164.38 | | | | | |
| | J.W. WOODWARD ST | COUNTY | UNPAVED | 25.67 | | | | | |
| | LISTER AVE | COUNTY | UNPAVED | 2879.98 | | | | | |
| | LISTER AVE | COUNTY | PAVED | 2927.47 | | | | | |
| | MONTES RD | COUNTY | PAVED | 20.13 | | | | | |
| | N. ROSARIO ST | COUNTY | PAVED | 781.78 | | | | | |
| | PRINCIPAL ST | COUNTY | PAVED | 2375.07 | | | | | |
| | RANCHITOS LINDOS CT | COUNTY | PAVED | 552.13 | | | | | |
| | RANCHO LA MESA CT | PRIVATE | UNPAVED | 469.64 | | | | | |
| | RANCHO LA MESA DR | COUNTY | PAVED | 2056.56 | | | | | |
| | S. ROSARIO ST | COUNTY | PAVED | 1256.69 | | | | | |
| | SAINT VALENTINE ST | COUNTY | PAVED | 1971.96 | | | | | |
| | SAN JOSE RD | COUNTY | PAVED | 11418.98 | | | | | |
| | VICTORIA ST | COUNTY | PAVED | 1271.51 | | | | | |
| | W. BELLMAN AVE | COUNTY | UNPAVED | 301.93 | | | | | |
| | W. BELLMAN AVE | COUNTY | PAVED | 402.17 | | | | | |

| | | | | | | | | | |
|--------------|---------------------|---------|---------|----------|-------------|----------|--------------|-----------|--|
| | W. CHOPE'S ST | COUNTY | PAVED | 400.63 | | | | | |
| | W. CHOPE'S ST | PRIVATE | UNPAVED | 798.11 | | | | | |
| | W. CORPENING AVE | COUNTY | PAVED | 614.70 | | | | | |
| | W. JOSEPHINE ST | PRIVATE | UNPAVED | 402.48 | | | | | |
| | W. SAN MIGUEL ST | COUNTY | PAVED | 3943.65 | | | | | |
| | W. SAN MIGUEL ST | PRIVATE | UNPAVED | 55.17 | | | | | |
| | | | | | | | | | |
| La Union | ALVAREZ RD | COUNTY | PAVED | 7793.64 | County (If) | | Private (If) | | |
| | AVIATION RD | COUNTY | UNPAVED | 541.77 | 41,605.48 | | 3,176.96 | | |
| | CALLE DELPHIA | COUNTY | PAVED | 1888.47 | Paved | Unpaved | Paved | Unpaved | |
| | CALLE PEQUEÑA | COUNTY | PAVED | 825.76 | 33,075.55 | 8,529.94 | 2,109.20 | 1,067.77 | |
| | CAMPOSANTO AVE | COUNTY | UNPAVED | 532.06 | | | | | |
| | CAMPOSANTO AVE | COUNTY | PAVED | 387.14 | | | | | |
| | CONEJO ST | COUNTY | PAVED | 1429.83 | | | | | |
| | E. AGUILA AVE | PRIVATE | PAVED | 2109.20 | | | | | |
| | EL CHAVO LN | PRIVATE | UNPAVED | 314.24 | | | | | |
| | GABALDON RD | COUNTY | UNPAVED | 1020.41 | | | | | |
| | GOLONDRINA ST | COUNTY | PAVED | 1143.77 | | | | | |
| | KRIEGEL RD | COUNTY | UNPAVED | 3822.06 | | | | | |
| | LA UNION AVE | COUNTY | UNPAVED | 1231.56 | | | | | |
| | LA UNION AVE | COUNTY | PAVED | 1045.19 | | | | | |
| | MALDONADO RD | PRIVATE | UNPAVED | 753.52 | | | | | |
| | MENDEZ ST | COUNTY | UNPAVED | 735.21 | | | | | |
| | PALOMA ST | COUNTY | UNPAVED | 646.87 | | | | | |
| | PALOMA ST | COUNTY | PAVED | 800.91 | | | | | |
| | ROSALES ST | COUNTY | PAVED | 815.03 | | | | | |
| | SALOME HERNANDEZ ST | COUNTY | PAVED | 1854.70 | | | | | |
| | SAN ANTONIO ST | COUNTY | PAVED | 1577.58 | | | | | |
| | SENTENARIO ST | COUNTY | PAVED | 2701.96 | | | | | |
| | SHORT ST | COUNTY | PAVED | 488.28 | | | | | |
| | SOUTH AVE | COUNTY | PAVED | 2120.27 | | | | | |
| | TELLES ST | COUNTY | PAVED | 1992.47 | | | | | |
| | VALLE CALIMADO ST | COUNTY | PAVED | 763.07 | | | | | |
| | VALLE PLANO RD | COUNTY | PAVED | 799.30 | | | | | |
| | VISNAGA ST | COUNTY | PAVED | 3960.22 | | | | | |
| | W. AGUILA AVE | COUNTY | PAVED | 687.94 | | | | | |
| | | | | | | | | | |
| Las Palmeras | JAMAICA LN | COUNTY | PAVED | 762.97 | County (If) | | Private (If) | | |
| | LAS PALMERAS RD | COUNTY | PAVED | 981.60 | 3,175.50 | | 2,052.93 | | |
| | LAS PALMERAS RD | PRIVATE | PAVED | 1281.28 | Paved | Unpaved | Paved | Unpaved | |
| | LOS COCOS LN | COUNTY | PAVED | 1430.93 | 3,175.50 | 0.00 | 2,052.93 | 0.00 | |
| | PALM TREE RD | PRIVATE | PAVED | 771.65 | | | | | |
| | | | | | | | | | |
| Leasburg | BACA RD | PRIVATE | UNPAVED | 2807.08 | County (If) | | Private (If) | | |
| | BEAR CLAW LN | PRIVATE | UNPAVED | 500.13 | 29,566.75 | | 20,572.44 | | |
| | CACTUS PATCH WAY | PRIVATE | UNPAVED | 1966.44 | Paved | Unpaved | Paved | Unpaved | |
| | CORRALONES RD | PRIVATE | UNPAVED | 2018.70 | 24,656.50 | 4,910.25 | 498.82 | 20,073.62 | |
| | CRITTER LN | PRIVATE | UNPAVED | 482.27 | | | | | |
| | DONA ANA RD | COUNTY | PAVED | 16939.77 | | | | | |
| | EAGLE WINGS RD | PRIVATE | UNPAVED | 2402.98 | | | | | |
| | EMBARCADERO RD | COUNTY | PAVED | 2447.95 | | | | | |
| | FOSSIL VIEW RD | COUNTY | UNPAVED | 3356.58 | | | | | |
| | FRANCIS WAY | PRIVATE | UNPAVED | 836.33 | | | | | |
| | HAYRIDE RD | COUNTY | PAVED | 4837.83 | | | | | |
| | HORNER RD | PRIVATE | UNPAVED | 1969.67 | | | | | |
| | IRONSHOE RD | PRIVATE | UNPAVED | 2036.47 | | | | | |
| | LATIGO LN | PRIVATE | UNPAVED | 1510.50 | | | | | |
| | MULE CREEK STREET | PRIVATE | PAVED | 498.82 | | | | | |
| | OLD MILL RD | PRIVATE | UNPAVED | 1595.05 | | | | | |
| | SLEEPY HOLLOW WAY | COUNTY | PAVED | 430.96 | | | | | |
| | SUNKEN TRAIN PL | PRIVATE | UNPAVED | 893.74 | | | | | |
| | WILLIAM BONNEY RD | PRIVATE | UNPAVED | 1054.26 | | | | | |
| | WINDFLYER LN | COUNTY | UNPAVED | 1553.67 | | | | | |

| Mesquite | | | | | | | | |
|---------------|--------------------|---------|---------|---------|-------------|-----------|--------------|-----------|
| | ACEITUNAS LN | PRIVATE | PAVED | 1942.44 | County (lf) | | Private (lf) | |
| | BRADBURY AVE | COUNTY | PAVED | 371.25 | 25,858.60 | | 22,202.35 | |
| | BRENNA RD | PRIVATE | UNPAVED | 464.88 | Paved | Unpaved | Paved | Unpaved |
| | BRYANT ST | COUNTY | PAVED | 820.92 | 14,798.63 | 11,059.97 | 3,928.77 | 18,273.59 |
| | COUNTY ROAD B-059 | COUNTY | PAVED | 283.22 | | | | |
| | EAST PLAZA DR | PRIVATE | PAVED | 1609.25 | | | | |
| | EAST SIDE CANAL RD | COUNTY | UNPAVED | 5351.66 | | | | |
| | EDWARD AVE | COUNTY | PAVED | 351.38 | | | | |
| | EMERSON AVE | COUNTY | PAVED | 934.29 | | | | |
| | FIREHOUSE RD | PRIVATE | UNPAVED | 2700.21 | | | | |
| | GREEN VALLEY CT | PRIVATE | UNPAVED | 876.68 | | | | |
| | HANNAH CT | COUNTY | PAVED | 373.33 | | | | |
| | HATHEWAY LN | PRIVATE | UNPAVED | 638.15 | | | | |
| | HAWTHORN ST | COUNTY | PAVED | 724.72 | | | | |
| | HILDA RD | PRIVATE | UNPAVED | 1165.80 | | | | |
| | HOMESTAKE RD | COUNTY | UNPAVED | 514.77 | | | | |
| | JARMON RD | PRIVATE | UNPAVED | 1948.60 | | | | |
| | JOHN GRISHAM DR | COUNTY | PAVED | 1294.46 | | | | |
| | KIRKPATRICK AVE | COUNTY | UNPAVED | 2305.77 | | | | |
| | LAS PARCELAS LP | COUNTY | PAVED | 1139.41 | | | | |
| | LOST DUTCHMAN DR | COUNTY | UNPAVED | 1357.71 | | | | |
| | MARAVILLA LN | PRIVATE | UNPAVED | 716.93 | | | | |
| | MARK TWAIN CT | COUNTY | PAVED | 361.48 | | | | |
| | MINTER RD | COUNTY | PAVED | 2344.34 | | | | |
| | NORTH LAKE RD | PRIVATE | UNPAVED | 777.82 | | | | |
| | PEPPERMINT PL | PRIVATE | UNPAVED | 650.15 | | | | |
| | POST ST | COUNTY | PAVED | 1062.63 | | | | |
| | RICE CT | COUNTY | PAVED | 431.38 | | | | |
| | SANTO TOMAS ST | COUNTY | PAVED | 1018.83 | | | | |
| | SEGOVIA LN | PRIVATE | UNPAVED | 1065.56 | | | | |
| | SEQUOIA RD | COUNTY | PAVED | 3287.00 | | | | |
| | SIERRA MADRE DR | COUNTY | UNPAVED | 865.92 | | | | |
| | TAWA AVE | PRIVATE | UNPAVED | 1054.61 | | | | |
| | THREE SONS RD | PRIVATE | UNPAVED | 2799.54 | | | | |
| | TRES CABALLOS PL | PRIVATE | UNPAVED | 2681.91 | | | | |
| | UNNAMED RD | PRIVATE | PAVED | 377.07 | | | | |
| | WANNABE RD | PRIVATE | UNPAVED | 732.75 | | | | |
| | WHITE OAKS RD | COUNTY | UNPAVED | 664.15 | | | | |
| Montana Vista | | | | | | | | |
| | ALAMO SECO RD | PRIVATE | UNPAVED | 1212.48 | County (lf) | | Private (lf) | |
| | ANGEL WINGS CT | PRIVATE | UNPAVED | 1133.03 | 18,713.40 | | 40,931.19 | |
| | ARELLANO RD | PRIVATE | UNPAVED | 1071.31 | Paved | Unpaved | Paved | Unpaved |
| | BENT WILLOW PL | PRIVATE | UNPAVED | 410.50 | 15,030.55 | 3,682.85 | 0.00 | 40,931.19 |
| | BERINO SCHOOL RD | COUNTY | PAVED | 651.05 | | | | |
| | BERINO SCHOOL RD | PRIVATE | UNPAVED | 343.97 | | | | |
| | BIGHORN ST | PRIVATE | UNPAVED | 2148.22 | | | | |
| | BRIZA PL | PRIVATE | UNPAVED | 351.57 | | | | |
| | CAMARGO ST | PRIVATE | UNPAVED | 2384.89 | | | | |
| | DEL ORO LN | PRIVATE | UNPAVED | 665.88 | | | | |
| | DELICIAS ST | PRIVATE | UNPAVED | 1466.92 | | | | |
| | E. JOY DR | COUNTY | PAVED | 5670.10 | | | | |
| | EL NOGAL LN | PRIVATE | UNPAVED | 929.67 | | | | |
| | ERNESTO RD | PRIVATE | UNPAVED | 1038.66 | | | | |
| | GAZELLE CT | PRIVATE | UNPAVED | 806.62 | | | | |
| | HONEYSUCKLE LN | PRIVATE | UNPAVED | 999.58 | | | | |
| | HOPE FARM RD | PRIVATE | UNPAVED | 575.82 | | | | |
| | HORSE RIDE PL | PRIVATE | UNPAVED | 820.33 | | | | |
| | LEIFESTE AVE | PRIVATE | UNPAVED | 1335.01 | | | | |
| | LIMON RD | PRIVATE | UNPAVED | 642.50 | | | | |
| | LIPPS RD | PRIVATE | UNPAVED | 542.50 | | | | |
| | LOS ENCINOS WAY | PRIVATE | UNPAVED | 725.70 | | | | |
| | LOS OLIVOS RD | PRIVATE | UNPAVED | 2428.53 | | | | |

| | | | |
|-------------------|---------|---------|---------|
| MEOQUI AVE | PRIVATE | UNPAVED | 634.77 |
| MONTANA AZUL ST | PRIVATE | UNPAVED | 2462.84 |
| MONTANA VISTA AVE | COUNTY | PAVED | 1826.01 |
| MONTE BELLO RD | PRIVATE | UNPAVED | 1345.50 |
| MULLEDEER TRL | PRIVATE | UNPAVED | 1098.41 |
| N. ESPIGA PL | PRIVATE | UNPAVED | 677.09 |
| N. GRAY QUAIL PL | PRIVATE | UNPAVED | 386.08 |
| NANEZ RD | PRIVATE | UNPAVED | 1227.87 |
| NIGHT OWL LN | PRIVATE | UNPAVED | 655.91 |
| NUEZ CT | PRIVATE | UNPAVED | 460.07 |
| PULASKI WAY | PRIVATE | UNPAVED | 696.84 |
| RED ROCK CT | PRIVATE | UNPAVED | 1468.29 |
| S. ESPIGA PL | PRIVATE | UNPAVED | 193.15 |
| S. GRAY QUAIL PL | PRIVATE | UNPAVED | 437.29 |
| SANTA MARIA LN | PRIVATE | UNPAVED | 1530.37 |
| SHRODERD | COUNTY | PAVED | 6620.51 |
| SIDEWINDER RD | PRIVATE | UNPAVED | 1004.99 |
| SOLDADO CT | PRIVATE | UNPAVED | 593.46 |
| STARLIGHT LN | PRIVATE | UNPAVED | 781.60 |
| VENADITO TRL | PRIVATE | UNPAVED | 3242.95 |
| W. JOY DR | COUNTY | PAVED | 262.88 |
| WARTHEN RD | COUNTY | UNPAVED | 3682.85 |

Moongate

| | | | |
|-----------------|---------|---------|----------|
| ARCO IRIS ST | PRIVATE | UNPAVED | 649.54 |
| ARROWHEAD RD | PRIVATE | UNPAVED | 5651.54 |
| ARROYO RD | PRIVATE | UNPAVED | 4565.41 |
| AURORA PL | PRIVATE | UNPAVED | 356.94 |
| BERTALS LN | PRIVATE | UNPAVED | 292.45 |
| BRAHMAN RD | COUNTY | PAVED | 1654.40 |
| BUMPY LN | PRIVATE | UNPAVED | 558.00 |
| CALLE CHICA | PRIVATE | UNPAVED | 468.97 |
| CALLE DEL LLANO | PRIVATE | PAVED | 931.11 |
| CHALLENGER PL | PRIVATE | UNPAVED | 7.74 |
| CORONA RD | COUNTY | PAVED | 2676.60 |
| CORONA RD | PRIVATE | UNPAVED | 5215.98 |
| COUGAR LN | PRIVATE | UNPAVED | 1313.75 |
| COYOTE RD | PRIVATE | UNPAVED | 5409.65 |
| DAWN LN | PRIVATE | UNPAVED | 523.01 |
| DRAGONFLY AVE | COUNTY | PAVED | 5237.83 |
| EAGLE RD | PRIVATE | UNPAVED | 2745.79 |
| EL CENTRO BLVD | COUNTY | PAVED | 10554.20 |
| EL NORTE RD | PRIVATE | UNPAVED | 660.58 |
| FOX RD | PRIVATE | UNPAVED | 9849.11 |
| GOPHER RD | PRIVATE | UNPAVED | 5405.76 |
| GREEN HILL CT | PRIVATE | UNPAVED | 305.62 |
| HAWK RD | PRIVATE | UNPAVED | 5373.11 |
| HONDO RD | COUNTY | UNPAVED | 2628.85 |
| HONDO RD | PRIVATE | UNPAVED | 2649.02 |
| INDIAN HEAD RD | PRIVATE | UNPAVED | 2627.90 |
| JACK RABBIT RD | PRIVATE | UNPAVED | 8050.72 |
| LUNA VISTA RD | COUNTY | UNPAVED | 2679.67 |
| LUNA VISTA RD | COUNTY | PAVED | 6587.90 |
| MACARTHUR RD | COUNTY | UNPAVED | 2634.65 |
| MACARTHUR RD | COUNTY | PAVED | 5389.26 |
| MACARTHUR RD | PRIVATE | UNPAVED | 1330.04 |
| MOONGATE RD | COUNTY | PAVED | 10633.77 |
| NEVAREZ CT | PRIVATE | UNPAVED | 1035.12 |
| OWLS NEST RD | PRIVATE | UNPAVED | 1314.53 |
| PRAIRIE DOG RD | PRIVATE | UNPAVED | 5406.41 |
| QUAIL VALLEY PL | COUNTY | PAVED | 411.68 |
| SCHAFFNER RD | PRIVATE | UNPAVED | 2616.74 |
| SUNRAY ST | PRIVATE | UNPAVED | 1306.34 |
| TERRITORIAL ST | PRIVATE | PAVED | 1130.02 |

| County (lf) | | Private (lf) | |
|-------------|----------|--------------|-----------|
| 51,088.82 | | 84,375.59 | |
| Paved | Unpaved | Paved | Unpaved |
| 43,145.65 | 7,943.17 | 4,432.22 | 79,943.36 |

| | | | | | | | | | |
|---------------|--------------------|---------|---------|---------|-------------|----------|--------------|-----------|--|
| | TRES YUCCAS RD | PRIVATE | UNPAVED | 2613.55 | | | | | |
| | TURN HERE RD | PRIVATE | UNPAVED | 557.02 | | | | | |
| | UNICORN LN | PRIVATE | UNPAVED | 338.00 | | | | | |
| | UNKNOWN | PRIVATE | PAVED | 1362.96 | | | | | |
| | VEREDA GRANATE RD | PRIVATE | UNPAVED | 400.45 | | | | | |
| | VISTA DEL NORTE ST | PRIVATE | PAVED | 1008.14 | | | | | |
| | VISTA DEL NORTE ST | PRIVATE | UNPAVED | 344.56 | | | | | |
| | | | | | | | | | |
| Mountain View | ARROYO RD | PRIVATE | UNPAVED | 2606.01 | County (lf) | | Private (lf) | | |
| | CHAMISO PL | PRIVATE | UNPAVED | 655.06 | 14,635.02 | | 33,479.40 | | |
| | CLIFFHANGER CT | PRIVATE | UNPAVED | 489.27 | Paved | Unpaved | Paved | Unpaved | |
| | CORONA RD | COUNTY | PAVED | 2600.13 | 14,635.02 | 0.00 | 3,246.75 | 30,232.65 | |
| | ENGLEHARDT RD | COUNTY | PAVED | 1297.00 | | | | | |
| | ERICKSON RD | PRIVATE | UNPAVED | 1784.82 | | | | | |
| | EVON DR | PRIVATE | UNPAVED | 1322.80 | | | | | |
| | GALAXY DR | COUNTY | PAVED | 1694.68 | | | | | |
| | GREEN HILL CT | PRIVATE | UNPAVED | 10.59 | | | | | |
| | HANGER LAKE RD | COUNTY | PAVED | 1978.31 | | | | | |
| | HANGER LAKE RD | PRIVATE | UNPAVED | 2631.60 | | | | | |
| | IVORY WING LN | PRIVATE | UNPAVED | 1083.95 | | | | | |
| | JAN LN | PRIVATE | UNPAVED | 848.95 | | | | | |
| | JEFFRIES ST | PRIVATE | UNPAVED | 2634.96 | | | | | |
| | LISA LN | PRIVATE | UNPAVED | 2623.20 | | | | | |
| | LUNA VISTA RD | COUNTY | PAVED | 1228.60 | | | | | |
| | MISSION LN | PRIVATE | UNPAVED | 1793.12 | | | | | |
| | RED ROOF CT | PRIVATE | UNPAVED | 701.92 | | | | | |
| | RHONDA LN | PRIVATE | UNPAVED | 1295.85 | | | | | |
| | SANDY ST | PRIVATE | UNPAVED | 413.00 | | | | | |
| | SCOTT LN | PRIVATE | UNPAVED | 1279.67 | | | | | |
| | SEXTON LN | PRIVATE | UNPAVED | 1965.63 | | | | | |
| | SILVERMOON CT | PRIVATE | UNPAVED | 527.92 | | | | | |
| | TAMMY LN | PRIVATE | UNPAVED | 2484.56 | | | | | |
| | THREEAWN | PRIVATE | UNPAVED | 404.09 | | | | | |
| | VENTURA CIR | PRIVATE | UNPAVED | 1314.24 | | | | | |
| | VISTA DEL NORTE ST | PRIVATE | UNPAVED | 0.69 | | | | | |
| | WAGONS CT | COUNTY | PAVED | 294.58 | | | | | |
| | WAGONS EAST TRL | PRIVATE | PAVED | 3246.75 | | | | | |
| | WEISNER RD | COUNTY | PAVED | 5541.72 | | | | | |
| | WEISNER RD | PRIVATE | UNPAVED | 514.36 | | | | | |
| | WHITE WING RD | PRIVATE | UNPAVED | 846.39 | | | | | |
| | | | | | | | | | |
| Old Picacho | CALLE CHIQUITA | PRIVATE | UNPAVED | 248.85 | County (lf) | | Private (lf) | | |
| | CALLE DEL CENTRO | COUNTY | PAVED | 578.30 | 5,419.08 | | 1,203.04 | | |
| | CUESTA RD | COUNTY | UNPAVED | 614.18 | Paved | Unpaved | Paved | Unpaved | |
| | LADERA AVE | COUNTY | PAVED | 710.99 | 3,746.30 | 1,672.78 | 0.00 | 1,203.04 | |
| | OLD PICACHO RD | COUNTY | PAVED | 1381.85 | | | | | |
| | PLAYA LN | COUNTY | PAVED | 478.21 | | | | | |
| | PLAYA LN | PRIVATE | UNPAVED | 443.55 | | | | | |
| | PUERTA LN | PRIVATE | UNPAVED | 111.62 | | | | | |
| | SHALEM COLONY TRL | COUNTY | PAVED | 596.95 | | | | | |
| | SIESTA LN | PRIVATE | UNPAVED | 399.03 | | | | | |
| | TRUCHA DR | COUNTY | UNPAVED | 1058.60 | | | | | |
| | | | | | | | | | |
| Organ | 1ST ST | COUNTY | UNPAVED | 170.37 | County (lf) | | Private (lf) | | |
| | 1ST ST | COUNTY | PAVED | 1040.66 | 17,542.81 | | 6,679.23 | | |
| | 2ND ST | COUNTY | UNPAVED | 160.63 | Paved | Unpaved | Paved | Unpaved | |
| | 2ND ST | COUNTY | PAVED | 752.74 | 9,416.58 | 8,126.23 | 1,049.74 | 5,629.49 | |
| | 3RD ST | COUNTY | UNPAVED | 3547.36 | | | | | |
| | 3RD ST | COUNTY | PAVED | 1105.04 | | | | | |
| | 4TH ST | COUNTY | UNPAVED | 170.37 | | | | | |
| | 4TH ST | COUNTY | PAVED | 1126.27 | | | | | |
| | 5TH ST | COUNTY | UNPAVED | 1123.06 | | | | | |
| | A ST | COUNTY | UNPAVED | 1160.58 | | | | | |

| | | | | | | | | | |
|----------------|------------------------|------------------|------------|---------|-------------|----------|--------------|----------|--|
| | B ST | COUNTY | UNPAVED | 1793.87 | | | | | |
| | COUNTY ROAD D-087 | COUNTY | PAVED | 337.84 | | | | | |
| | FURNACE ST | COUNTY | PAVED | 2559.08 | | | | | |
| | HAWKEYE CANYON CT | PRIVATE | UNPAVED | 658.29 | | | | | |
| | OLD ORGAN MAIN ST | COUNTY | PAVED | 691.52 | | | | | |
| | ORGAN PATH LN | PRIVATE | UNPAVED | 2068.21 | | | | | |
| | PADRE LA RUE ST | COUNTY | PAVED | 1803.43 | | | | | |
| | SABER RIDGE CT | PRIVATE | UNPAVED | 1724.52 | | | | | |
| | SLY SONG CIR | PRIVATE | PAVED | 1049.74 | | | | | |
| | TRINITY RIDGE DR | PRIVATE | UNPAVED | 1178.48 | | | | | |
| | | | | | | | | | |
| Plácitas | ALBIDRES ST | COUNTY | PAVED | 935.31 | County (If) | | Private (If) | | |
| | ALBIDRES ST | PRIVATE | UNPAVED | 100.41 | 7,482.84 | | 327.39 | | |
| | BIANES ST | COUNTY | PAVED | 940.72 | Paved | Unpaved | Paved | Unpaved | |
| | MONTICELLO AVE | COUNTY | PAVED | 702.40 | 7,482.84 | 0.00 | 0.00 | 327.39 | |
| | PICAFLOR AVE | COUNTY | PAVED | 640.84 | | | | | |
| | PLACITAS AVE | COUNTY | PAVED | 1337.34 | | | | | |
| | S. CASTANEDA RD | COUNTY | PAVED | 415.03 | | | | | |
| | TOPEKA AVE | COUNTY | PAVED | 1141.62 | | | | | |
| | TRUJILLO ST | COUNTY | PAVED | 1369.58 | | | | | |
| TRUJILLO ST | PRIVATE | UNPAVED | 226.98 | | | | | | |
| | | | | | | | | | |
| Radium Springs | NIGHTHAWK LN | PRIVATE | UNPAVED | 1335.58 | County (If) | | Private (If) | | |
| | RIO NORTE DR | PRIVATE | PAVED | 14.06 | 0.00 | | 1,349.64 | | |
| | | | | | Paved | Unpaved | Paved | Unpaved | |
| | | | | 0.00 | 0.00 | 14.06 | 1,335.58 | | |
| | | | | | | | | | |
| Rincon | BAKER ST | COUNTY | PAVED | 362.58 | County (If) | | Private (If) | | |
| | BAKER ST | PRIVATE | UNPAVED | 698.04 | 8,271.71 | | 4,309.74 | | |
| | BEDROCK PL | COUNTY | PAVED | 297.25 | Paved | Unpaved | Paved | Unpaved | |
| | BEDROCK PL | PRIVATE | UNPAVED | 238.66 | 5,611.16 | 2,660.55 | 0.00 | 4,309.74 | |
| | CACTUS ST | COUNTY | UNPAVED | 1068.48 | | | | | |
| | COREA ST | COUNTY | PAVED | 1025.59 | | | | | |
| | COUNTY ROAD E-016 | COUNTY | UNPAVED | 7.35 | | | | | |
| | DERRY AVE | COUNTY | PAVED | 1435.37 | | | | | |
| | HARLAN ST | COUNTY | PAVED | 363.07 | | | | | |
| | HARLAN ST | PRIVATE | UNPAVED | 704.97 | | | | | |
| | HAUSER ST | PRIVATE | UNPAVED | 865.92 | | | | | |
| | INCA ST | PRIVATE | UNPAVED | 409.91 | | | | | |
| | KINGMAN ST | COUNTY | PAVED | 367.68 | | | | | |
| | KINGMAN ST | PRIVATE | UNPAVED | 528.58 | | | | | |
| | MANTOOTH LP | COUNTY | PAVED | 1759.61 | | | | | |
| | PALMILLA ST | COUNTY | UNPAVED | 1063.19 | | | | | |
| | SABERTOOTH LN | COUNTY | UNPAVED | 521.53 | | | | | |
| | TOLTEC RD | PRIVATE | UNPAVED | 863.66 | | | | | |
| | | | | | | | | | |
| Rodey | E. BENINO TORRES AVE | COUNTY | PAVED | 1039.19 | County (If) | | Private (If) | | |
| | E. FLORENCIO LOPEZ AVE | COUNTY | PAVED | 721.89 | 11,022.68 | | 816.47 | | |
| | E. JESUS SILVA AVE | COUNTY | UNPAVED | 177.81 | Paved | Unpaved | Paved | Unpaved | |
| | E. JESUS SILVA AVE | COUNTY | PAVED | 718.54 | 6,589.40 | 4,433.27 | 0.00 | 816.47 | |
| | GREGORIO MIRANDA ST | COUNTY | UNPAVED | 300.73 | | | | | |
| | GREGORIO MIRANDA ST | COUNTY | PAVED | 722.59 | | | | | |
| | N. EL COLORADO ST | COUNTY | PAVED | 1119.89 | | | | | |
| | N. JOSE SERNA ST | COUNTY | UNPAVED | 322.38 | | | | | |
| | N. JOSE SERNA ST | COUNTY | PAVED | 745.49 | | | | | |
| | N. MARIANO TRUJILLO ST | COUNTY | UNPAVED | 579.99 | | | | | |
| | N. MARIANO TRUJILLO ST | COUNTY | PAVED | 360.97 | | | | | |
| | N. VICTOR DURAN ST | COUNTY | UNPAVED | 376.20 | | | | | |
| | S. EL COLORADO ST | COUNTY | UNPAVED | 280.67 | | | | | |
| | S. EL COLORADO ST | COUNTY | PAVED | 559.46 | | | | | |
| | S. MARIANO TRUJILLO ST | COUNTY | UNPAVED | 204.37 | | | | | |
| | S. VICTOR DURAN ST | COUNTY | UNPAVED | 880.55 | | | | | |
| | UNNAMED | UNIMPROVED TRAIL | UNIMPROVED | 1721.79 | | | | | |

| | | | | | | | | | |
|-------------------|---------------------------|---------|---------|----------|--|-------------|-----------|--------------|-----------|
| | W. BENINO TORRES AVE | COUNTY | PAVED | 601.38 | | | | | |
| | W. FLORENCIO LOPEZ AVE | COUNTY | UNPAVED | 356.15 | | | | | |
| | W. FLORENCIO LOPEZ AVE | PRIVATE | UNPAVED | 816.47 | | | | | |
| | W. JESUS SILVA AVE | COUNTY | UNPAVED | 323.95 | | | | | |
| | W. LUCIANO CHAVEZ ST | COUNTY | UNPAVED | 630.47 | | | | | |
| | | | | | | | | | |
| Salem | ABRAHAM AVE | PRIVATE | UNPAVED | 881.17 | | County (lf) | | Private (lf) | |
| | B. B. ROMIG DR | COUNTY | PAVED | 1522.25 | | 24,670.73 | | 3,174.90 | |
| | CARRIAGE HILLS RD | COUNTY | PAVED | 1976.52 | | Paved | Unpaved | Paved | Unpaved |
| | COOLIDGE AVE | PRIVATE | UNPAVED | 248.82 | | 23,618.36 | 1,052.37 | 0.00 | 3,174.90 |
| | EISENHOWER AVE | COUNTY | PAVED | 1310.15 | | | | | |
| | FATHER RAMON ESTIVILL AVE | COUNTY | PAVED | 2300.00 | | | | | |
| | FLORENCIO ST | COUNTY | PAVED | 1302.10 | | | | | |
| | FORD ST | COUNTY | PAVED | 1310.35 | | | | | |
| | GARFIELD AVE | COUNTY | PAVED | 1924.56 | | | | | |
| | GRANDE AVE | COUNTY | UNPAVED | 1039.31 | | | | | |
| | GRANDE AVE | COUNTY | PAVED | 1712.58 | | | | | |
| | HAYES ST | COUNTY | PAVED | 1304.33 | | | | | |
| | HOOVER ST | COUNTY | PAVED | 1309.34 | | | | | |
| | OGAZ AVE | COUNTY | PAVED | 1291.88 | | | | | |
| | PRESIDENTE AVE | PRIVATE | UNPAVED | 952.42 | | | | | |
| | SALEM ST | COUNTY | UNPAVED | 13.06 | | | | | |
| | SALEM ST | COUNTY | PAVED | 2758.34 | | | | | |
| | SEMPER FI AVE | PRIVATE | UNPAVED | 1092.49 | | | | | |
| | TRUMAN ST | COUNTY | PAVED | 1299.61 | | | | | |
| | ULYSSES AVE | COUNTY | PAVED | 2296.35 | | | | | |
| | | | | | | | | | |
| San Isidro | SAN YSIDRO RD | COUNTY | PAVED | 1960.49 | | County (lf) | | Private (lf) | |
| | | | | | | 1,960.49 | | 0.00 | |
| | | | | | | Paved | Unpaved | Paved | Unpaved |
| | | | | | | 1,960.49 | 0.00 | 0.00 | 0.00 |
| | | | | | | | | | |
| San Miguel | ALARGO DR | COUNTY | PAVED | 2536.90 | | County (lf) | | Private (lf) | |
| | ARCHER FARM RD | COUNTY | PAVED | 4898.57 | | 48,153.89 | | 13,086.01 | |
| | AVENIDA DEL PANTEON | COUNTY | UNPAVED | 1562.67 | | Paved | Unpaved | Paved | Unpaved |
| | AVENIDA DEL PANTEON | COUNTY | PAVED | 4080.31 | | 31,505.18 | 16,648.71 | 0.00 | 13,086.01 |
| | CALLE DE LAS FLORES | COUNTY | PAVED | 554.56 | | | | | |
| | CALLE DE LUCERO | COUNTY | PAVED | 1021.66 | | | | | |
| | CAMINO ALEGRE | PRIVATE | UNPAVED | 1024.59 | | | | | |
| | CAMUNEZ RD | PRIVATE | UNPAVED | 2068.56 | | | | | |
| | CASCADE AVE | COUNTY | PAVED | 1153.58 | | | | | |
| | CASTILLO PL | COUNTY | PAVED | 550.66 | | | | | |
| | CASTILLO RD | COUNTY | PAVED | 8188.12 | | | | | |
| | COUNTY ROAD B-010 | COUNTY | UNPAVED | 11274.69 | | | | | |
| | COUNTY ROAD B-041 | COUNTY | UNPAVED | 1346.28 | | | | | |
| | COUNTY ROAD B-042 | COUNTY | UNPAVED | 1724.54 | | | | | |
| | D. E. RODRIGUEZ RD | PRIVATE | UNPAVED | 1132.91 | | | | | |
| | E. SAVANNAH RD | COUNTY | PAVED | 820.26 | | | | | |
| | EDELMIRA ST | PRIVATE | UNPAVED | 467.57 | | | | | |
| | GONZALES RD | PRIVATE | UNPAVED | 1387.45 | | | | | |
| | LAS COLMENAS RD | PRIVATE | UNPAVED | 1544.93 | | | | | |
| | LAS FLORES CIR | COUNTY | PAVED | 1933.08 | | | | | |
| | MAPLEWOOD AVE | PRIVATE | UNPAVED | 325.32 | | | | | |
| | MAPLEWOOD AVE | COUNTY | PAVED | 317.80 | | | | | |
| | MOONLIGHT RD | PRIVATE | UNPAVED | 919.09 | | | | | |
| | NOPAL LN | PRIVATE | UNPAVED | 325.62 | | | | | |
| | OZARK ST | COUNTY | PAVED | 652.67 | | | | | |
| | PEACEFUL PINES LN | PRIVATE | UNPAVED | 1696.37 | | | | | |
| | RAG WEED TRL | PRIVATE | UNPAVED | 888.91 | | | | | |
| | ROSEWOOD ST | COUNTY | PAVED | 473.79 | | | | | |
| | STARDUST RD | PRIVATE | UNPAVED | 887.68 | | | | | |
| | TIERRA DEL SOL | COUNTY | PAVED | 996.35 | | | | | |
| | TWILIGHT RD | COUNTY | UNPAVED | 652.16 | | | | | |

| | | | | |
|-----------|--------------------|---------|---------|---------|
| | VISTA ELEGANTE CT | PRIVATE | UNPAVED | 417.01 |
| | VOYAGER ST | COUNTY | PAVED | 600.07 |
| | W. SAVANNAH RD | COUNTY | UNPAVED | 88.36 |
| | W. SAVANNAH RD | COUNTY | PAVED | 2726.79 |
| | | | | |
| San Pablo | AVENIDA DE QUINTAS | COUNTY | PAVED | 2153.52 |
| | CALLE DE OSO | PRIVATE | UNPAVED | 305.58 |
| | CHELSEA RD | PRIVATE | UNPAVED | 1128.91 |
| | EL FARO ST | COUNTY | PAVED | 1495.68 |
| | LAMAR RD | COUNTY | PAVED | 1630.43 |
| | MICAN CT | PRIVATE | UNPAVED | 266.62 |
| | ORCHARD AVE | PRIVATE | UNPAVED | 1208.81 |
| | SAN PABLO RD | COUNTY | PAVED | 1260.24 |
| | SANTA CRUZ RD | PRIVATE | UNPAVED | 2225.53 |
| | SAUCO LN | PRIVATE | UNPAVED | 539.54 |
| | STRYKER RD | PRIVATE | UNPAVED | 869.87 |
| | VICHIS CT | PRIVATE | UNPAVED | 502.77 |
| | | | | |
| Tortugas | BLACKHAWK ST | COUNTY | UNPAVED | 478.13 |
| | BLACKHAWK ST | COUNTY | PAVED | 1710.45 |
| | CASA DE PUEBLO ST | COUNTY | PAVED | 558.60 |
| | EMILIA AVE | COUNTY | PAVED | 1801.50 |
| | EUGENIO ST | COUNTY | PAVED | 269.36 |
| | GUADALUPE ST | COUNTY | PAVED | 1398.80 |
| | JUAN DIEGO AVE | COUNTY | PAVED | 2719.07 |
| | PAROQUIA ST | COUNTY | PAVED | 2084.49 |
| | PIRO AVE | COUNTY | PAVED | 1745.22 |
| | RENTERIA ST | COUNTY | PAVED | 1619.93 |
| | SAN FELIPE AVE | COUNTY | PAVED | 2652.22 |
| | SAN FRANCISCO ST | COUNTY | PAVED | 2439.53 |
| | TEPEYAC ST | COUNTY | PAVED | 559.11 |
| | TIGUA DR | COUNTY | PAVED | 1789.71 |
| | TILE AVE | COUNTY | PAVED | 2344.14 |
| | TURTLEDOVE PL | PRIVATE | UNPAVED | 528.47 |
| | UNNAMED RD | COUNTY | PAVED | 145.29 |
| | | | | |
| Vado | APIO LN | PRIVATE | UNPAVED | 0.19 |
| | BOY LN | PRIVATE | UNPAVED | 448.64 |
| | BOYER RD | COUNTY | UNPAVED | 1738.71 |
| | BRADY BACK CT | PRIVATE | UNPAVED | 696.62 |
| | BRADY ST | PRIVATE | UNPAVED | 2334.00 |
| | CEBOLLA LN | PRIVATE | UNPAVED | 3314.02 |
| | CENTER VALLEY RD | COUNTY | UNPAVED | 674.76 |
| | CHIHUAHUA AVE | PRIVATE | UNPAVED | 1162.79 |
| | CILANTRO LN | PRIVATE | UNPAVED | 3.38 |
| | COLEMAN RD | PRIVATE | UNPAVED | 1123.56 |
| | COORS RD | PRIVATE | UNPAVED | 1907.56 |
| | CRAZY HORSE AVE | PRIVATE | UNPAVED | 1838.11 |
| | ELLA MAE RD | PRIVATE | UNPAVED | 1312.96 |
| | ESQUINA DR | PRIVATE | UNPAVED | 1411.08 |
| | ESITANCIA ST | PRIVATE | UNPAVED | 2751.27 |
| | FUENTES LN | PRIVATE | UNPAVED | 541.63 |
| | GOMEZ RD | PRIVATE | UNPAVED | 805.46 |
| | HIGH VALLEY RD | COUNTY | PAVED | 25.36 |
| | HIGHLUNE RD | PRIVATE | UNPAVED | 1480.75 |
| | HOLGUIN RD | COUNTY | UNPAVED | 1606.45 |
| | HOLGUIN RD | COUNTY | PAVED | 5266.40 |
| | INDIO WAY | PRIVATE | UNPAVED | 590.24 |
| | JOEL DR | COUNTY | PAVED | 322.00 |
| | LECHUGA RD | COUNTY | PAVED | 3005.20 |
| | LECHUGA RD | PRIVATE | UNPAVED | 1054.98 |
| | LUNA BLANCA CT | PRIVATE | UNPAVED | 320.31 |
| | McCRIMON ST | COUNTY | PAVED | 1191.41 |

| | | | |
|-------------|----------|--------------|-----------|
| County (lf) | | Private (lf) | |
| 6,539.87 | | 7,047.62 | |
| Paved | Unpaved | Paved | Unpaved |
| 6,539.87 | 0.00 | 0.00 | 7,047.62 |
| | | | |
| | | | |
| | | | |
| County (lf) | | Private (lf) | |
| 24,315.54 | | 528.47 | |
| Paved | Unpaved | Paved | Unpaved |
| 23,837.41 | 478.13 | 0.00 | 528.47 |
| | | | |
| | | | |
| | | | |
| County (lf) | | Private (lf) | |
| 17,706.36 | | 31,469.72 | |
| Paved | Unpaved | Paved | Unpaved |
| 13,686.44 | 4,019.92 | 0.00 | 31,469.72 |
| | | | |
| | | | |
| | | | |

| | | | | | | | | | |
|---------------------|----------------|-----------------------|---------|-----------------|------------------|-------------|--------------|--------------|---------|
| | MOSQUITO CT | PRIVATE | UNPAVED | 1072.69 | | | | | |
| | MYERS RD | COUNTY | PAVED | 777.84 | | | | | |
| | MYERS RD | PRIVATE | UNPAVED | 1931.89 | | | | | |
| | OLLIN LN | COUNTY | PAVED | 632.59 | | | | | |
| | PATTY LN | PRIVATE | UNPAVED | 474.20 | | | | | |
| | PRESA AVE | PRIVATE | UNPAVED | 1294.49 | | | | | |
| | QUINTO SOL LP | COUNTY | PAVED | 1048.05 | | | | | |
| | JAPIR ROAD | COUNTY | PAVED | 1417.60 | | | | | |
| | TARIN RD | PRIVATE | UNPAVED | 909.48 | | | | | |
| | UNNAMED RD | PRIVATE | UNPAVED | 219.19 | | | | | |
| | WARD RD | PRIVATE | UNPAVED | 2470.24 | | | | | |
| Winterhaven | BURKIERD | COUNTY | PAVED | 1495.63 | | County (lf) | | Private (lf) | |
| | ROADRUNNER LN | COUNTY | PAVED | 1575.35 | | 5,314.34 | | 0.00 | |
| | WINTERHAVEN DR | COUNTY | PAVED | 2243.35 | | Paved | Unpaved | Paved | Unpaved |
| | | | | | | 5,314.34 | 0.00 | 0.00 | 0.00 |
| | | | | | Totals | | | | |
| | | | | | County (lf) | | Private (lf) | | |
| | | | | | 1,157,085.79 | | 477,379.25 | | |
| | | | | | Paved | Unpaved | Paved | Unpaved | |
| | | | | | 831,987.25 | 325,098.54 | 33,996.04 | 443,383.22 | |
| COST ESTIMATE | | | | | | | | | |
| COST PER MILE PAVED | | COST PER MILE UNPAVED | | | | | | | |
| \$125,000.00 | | \$1,000,000.00 | | | | | | | |
| | | | | | | | | | |
| COUNTY | | | | | | | | | |
| PAVED | | UNPAVED | | TOTAL | | | | | |
| \$19,696,667.87 | | \$61,571,693.38 | | \$81,268,361.25 | | | | | |
| | | | | | | | | | |
| PRIVATE | | | | | | | | | |
| PAVED | | UNPAVED | | TOTAL | | | | | |
| \$804,830.39 | | \$83,974,094.50 | | \$84,778,924.89 | | | | | |
| | | | | | | | | | |
| | | | | | GRAND TOTAL | | | | |
| | | | | | \$166,047,286.14 | | | | |

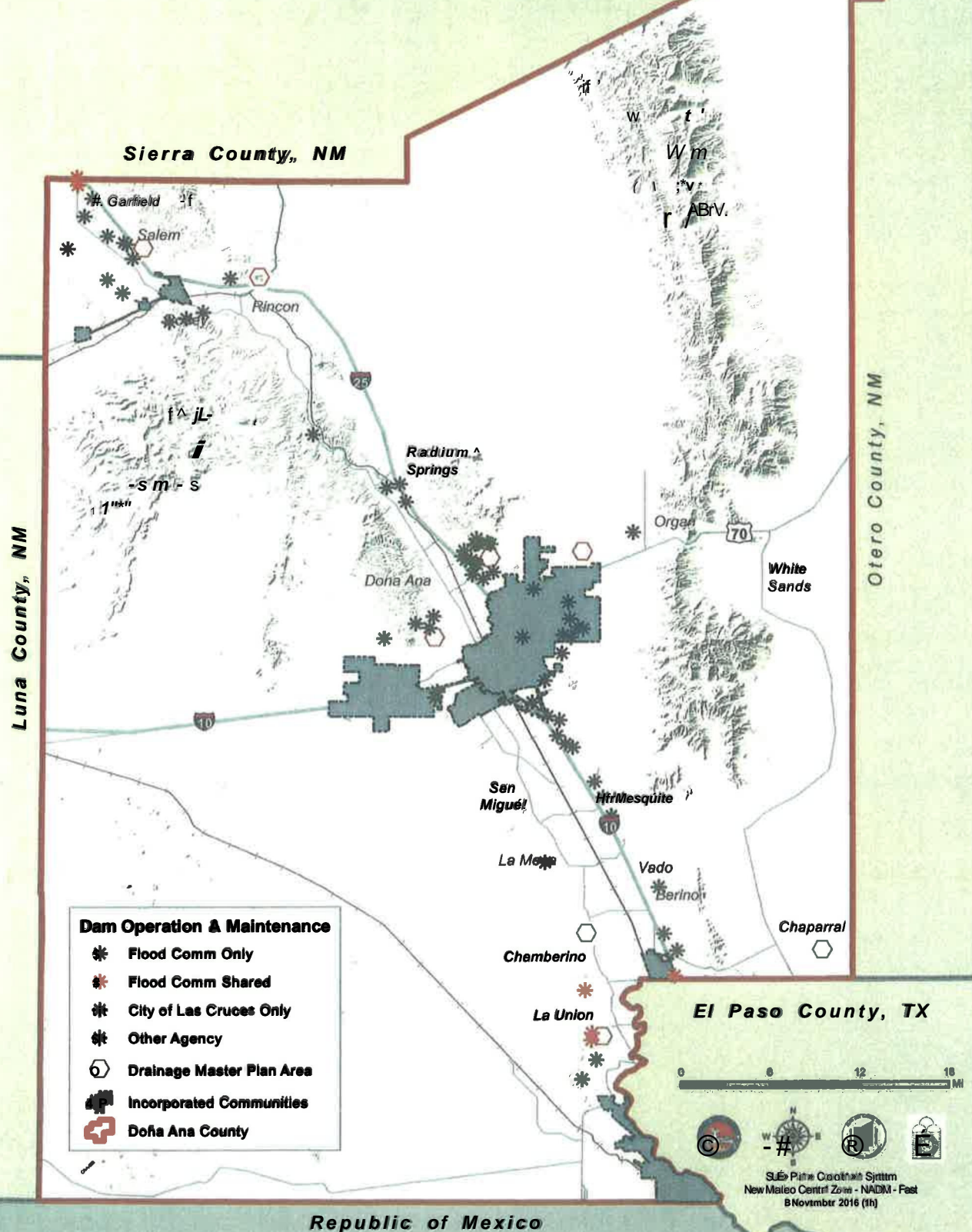
APPENDIX C

STORMWATER MANAGEMENT

- **MAP OF DAMS & DRAINAGE MASTER PLANS**
- **PROJECT SUMMARIES**

Doña Ana County, NM

Dam Operation & Maintenance and Drainage Master Plans



Flood

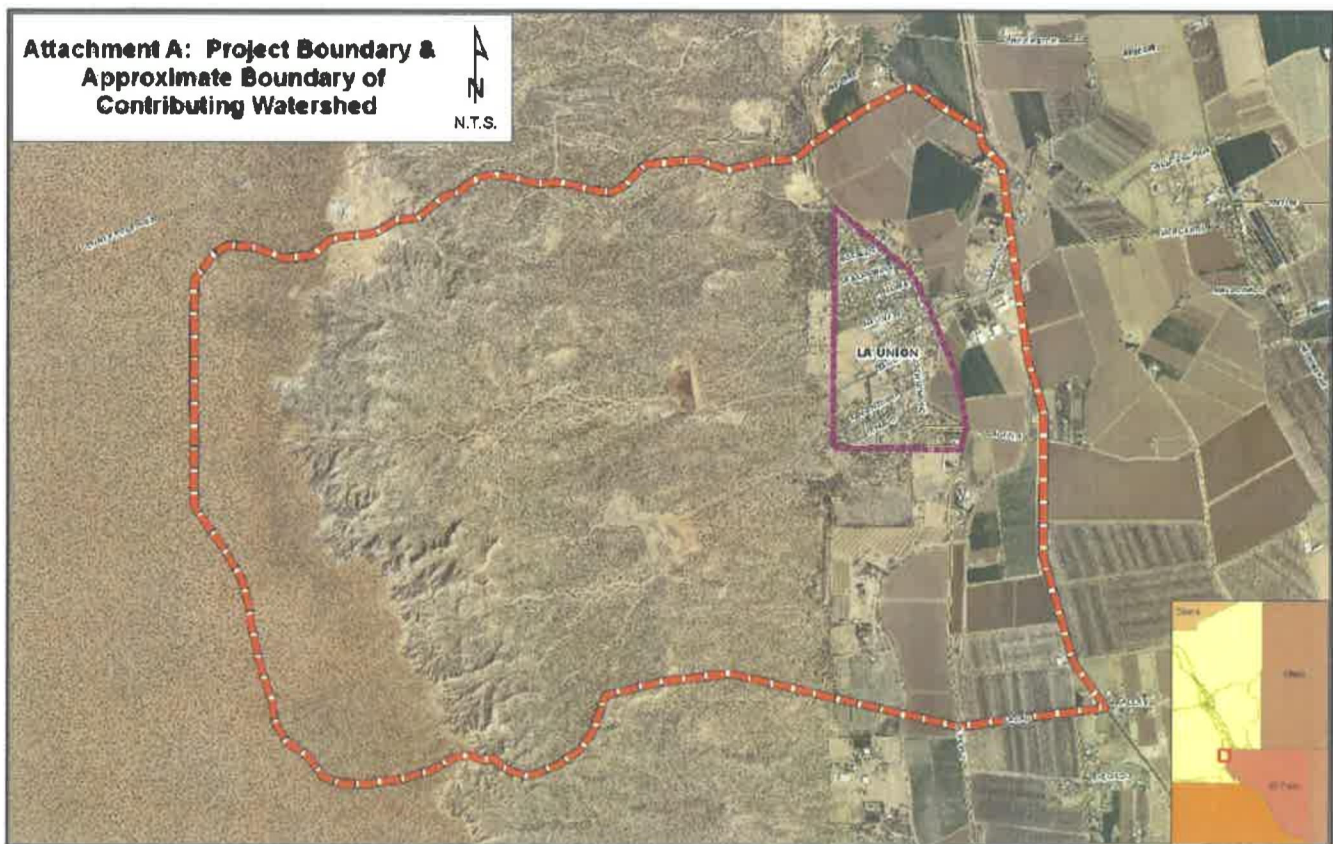
The Flood Commission continues to work on identifying flooding issues throughout the county. Our primary tool is to develop Drainage Master Plans (DMPs) for the affected areas. The DMPs quantify the flood water that needs to be addressed and identifies capital projects that can reduce or alleviate flooding. The following is a list of completed DMPs associated with colonias and the cost of the capital projects that are not currently on the ICIP:

| | |
|--------------------|-----------------------------|
| La Union | \$20,000,000 |
| East Mesa | \$58,100,000 |
| Chaparral | \$41,000,000 |
| Old Pichaco | \$ 8,650,000 |
| Salem | \$ 1,700,000 |
| Rincon | \$ 1,000,000 |
| Chamberino | \$ 2,700,000 |
| Total | <u>\$133,150,000</u> |

Drainage Master Plans are currently underway for the colonias of Doña Ana, Montana Vista and Mesquite. The Village of Hatch is currently working on a Drainage Master Plan for the Placitas Arroyo the impacts the Village of Hatch, and the colonias of Placitas and Milagro. The costs listed above do not include improvements of the existing flood control structures.

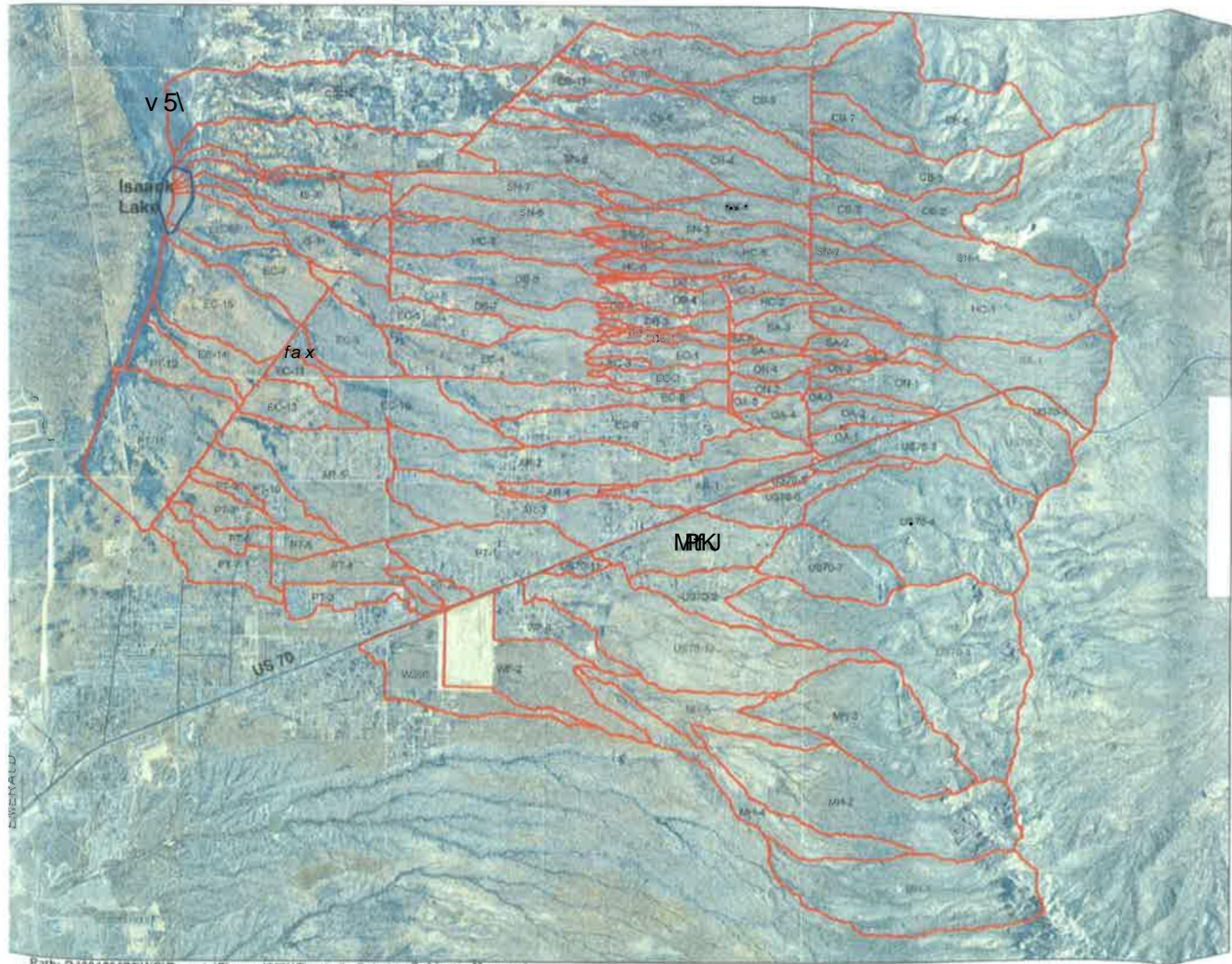
La Union

The Colonia of La Union is a small community with a population of approximately 300 located approximately 26.6 miles southeast of Las Cruces, NM, 10.9 miles northwest of Sunland Park, NM and 1.2 miles west of the intersection of State Hwy 28 and Mercantil Ave. The community is built downstream of 2 small dams that were built to protect farm fields from sediment that washes into the fields during storms. The contributing watershed is 3.25 square miles with an elevation change of over 300 ft. The dams were never intended to protect people or homes and do not meet any of the current design standards. A Drainage Master Plan was completed in 2013 that identified the infrastructure necessary to replace the existing structures. It was determined that the most cost effective solution is to construct a new flood control dam that would release water in a measure and controlled flow. Due to existing topography and infrastructure it is necessary to release the storm water into an existing irrigation drain. Additional, as yet undefined, improvements are necessary to provide sufficient capacity in the drain. The proposed projects have an estimated cost of \$20,000,000.



East Mesa

The East Mesa is an area directly adjacent to and north east of the City of Las Cruces, NM. The watershed covers approximately 60 square miles with an elevation change of over 3400 ft. The area incorporates the colonias of Butterfield Park, Cattleland Estates, Mountain view, and Moongate. Below is a map showing the watershed.



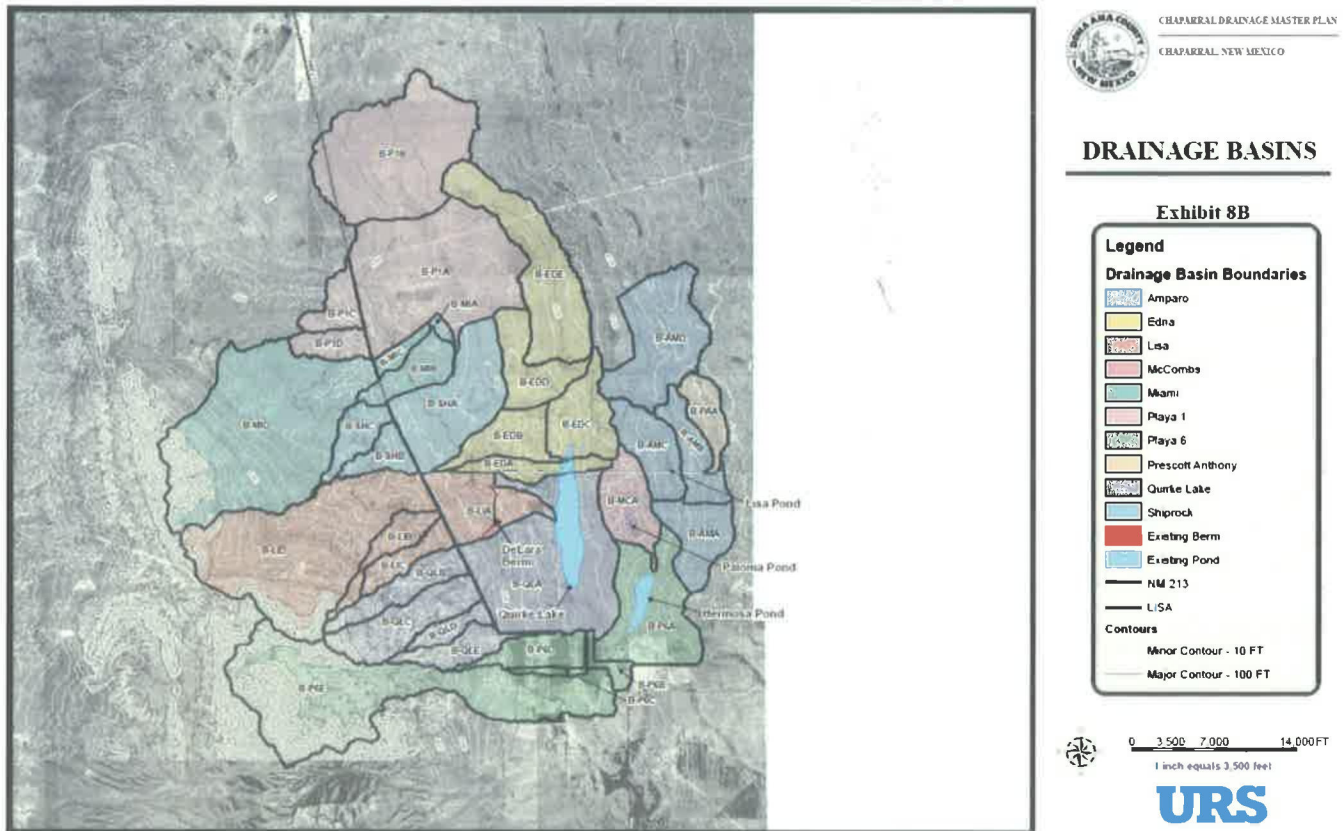
Path: P:\20120075\WR\Renrds\Figures\NRIJ\Figure 8 - Existing Subbasin Map.mxd

The flow patterns for the watershed are varied and complex. Over many years small subdivisions were developed without an overall drainage plan, making the capital improvements necessary more costly. The estimated cost for the proposed improvements for the East Mesa is \$58,100,000. Below is a map showing the proposed projects.



Chaparral

The unincorporated community of Chaparral is located in southeastern Doña Ana County west of the Franklin Mountains, immediately north of El Paso, Texas. Open space surrounds the community with much of the adjacent property under the jurisdiction of the Bureau of Land Management (BLM), the New Mexico State Land Office and McGregor Range (U.S. Military). There are 15 major arroyo systems originating out of the mountains flowing into the community, which includes 20,000 acres of undeveloped land. In addition, 4 minor drainage basins located in Texas with 4,640 acres of undeveloped land contribute to the watersheds that affect Chaparral. The total water shed is 38.5 square miles with an elevation change of over 1230 feet.

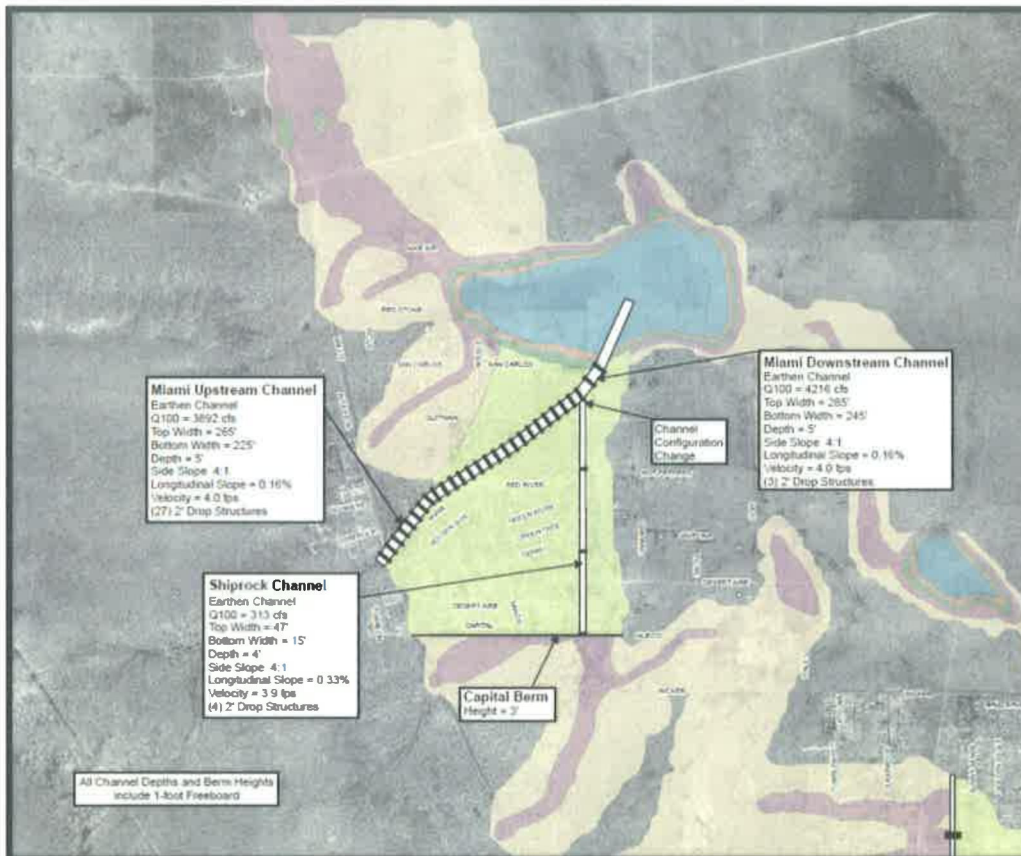


The estimated cost of improvements for Chaparral is \$41,000,000. The next 3 maps show the proposed improvements.



PROPOSED IMPROVEMENT NORTH SYSTEM

Exhibit 13B



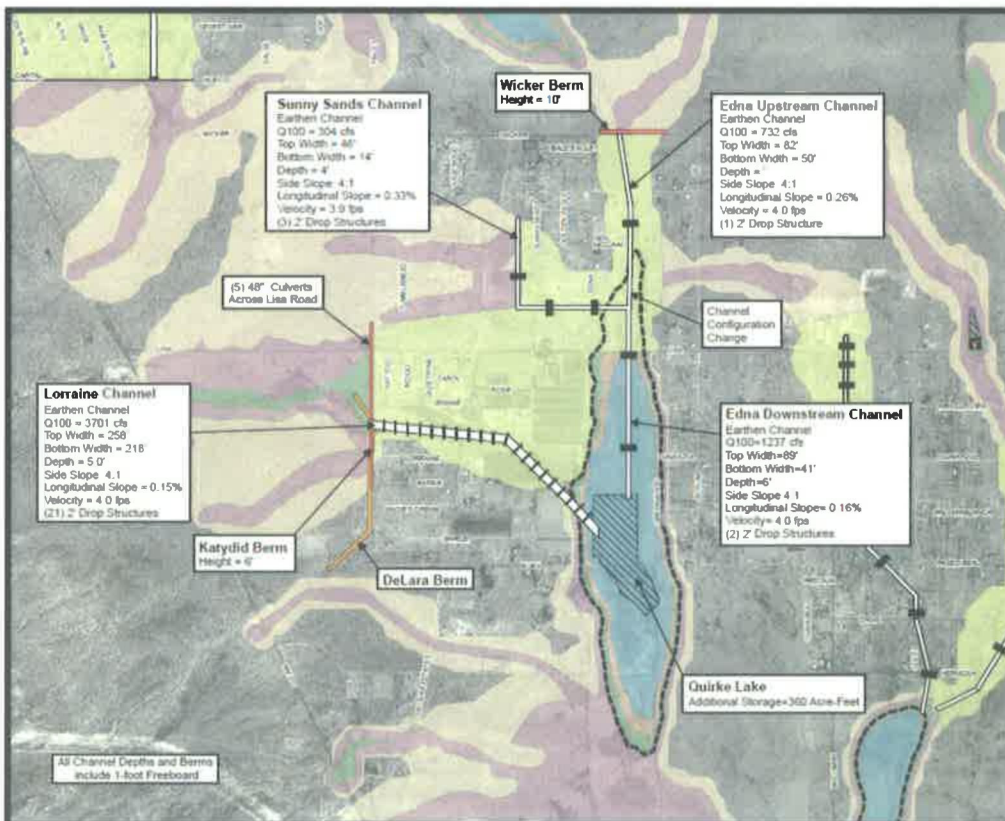
0 1,000 2,000 4,000 FT
1 inch equals 1,000 feet

URS



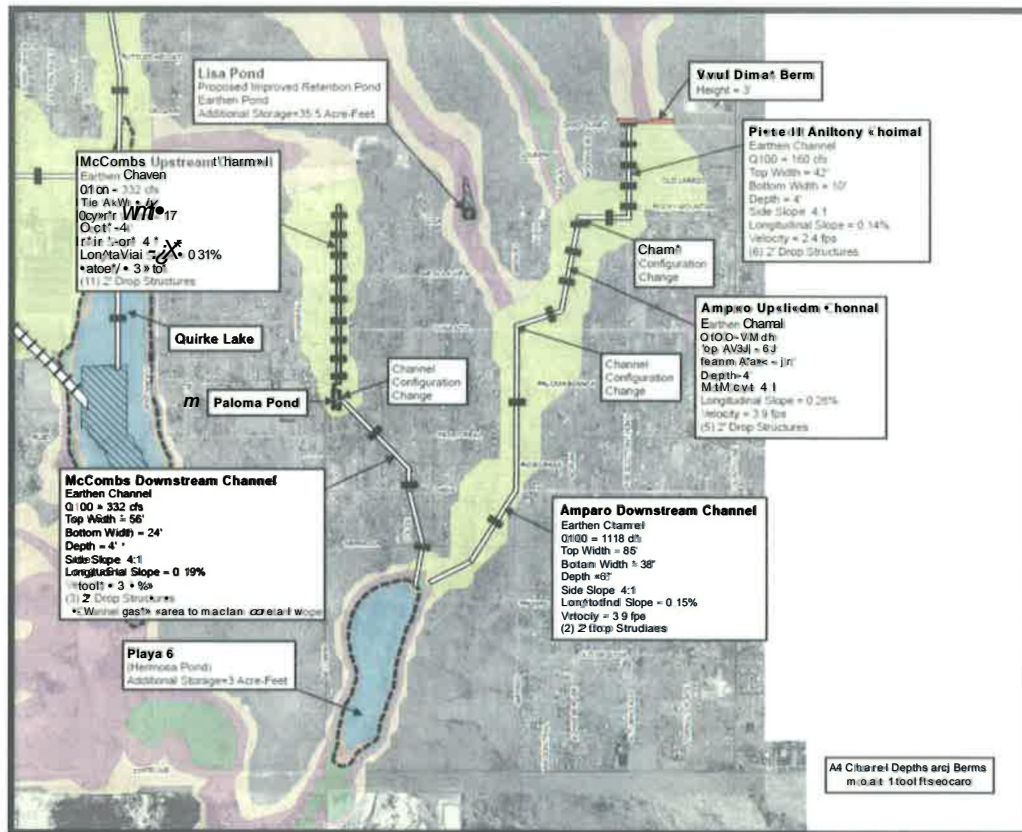
PROPOSED IMPROVEMENT CENTRAL SYSTEM

Exhibit 14B



0 1,000 2,000 4,000 FT
1 inch equals 1,000 feet

URS



CHAPARRAL DRAINAGE MASTER PLAN
CHAPARRAL, NEW MEXICO

PROPOSED IMPROVEMENT SOUTH SYSTEM

Exhibit 15B

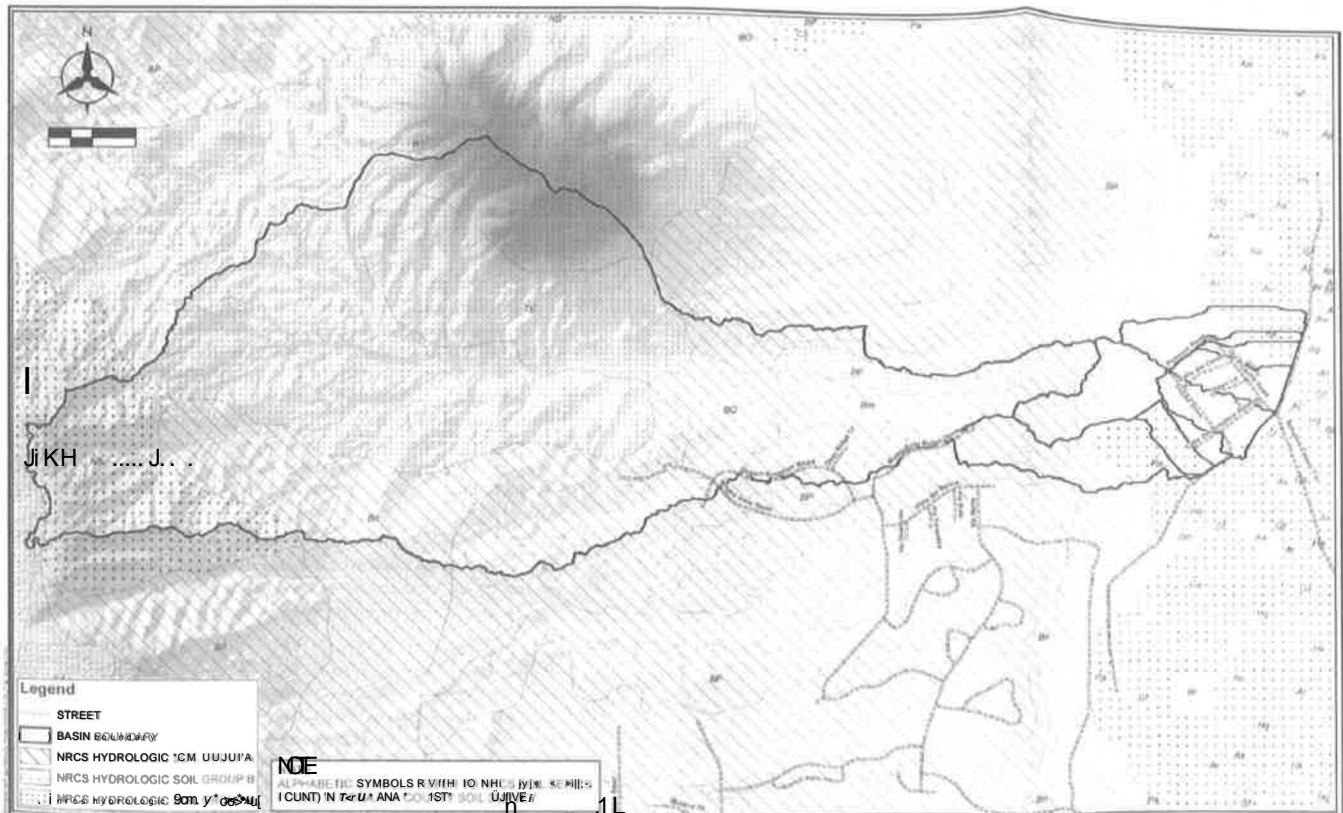


0 1000 2,000 4,000
1 inch equals 1,000 feet

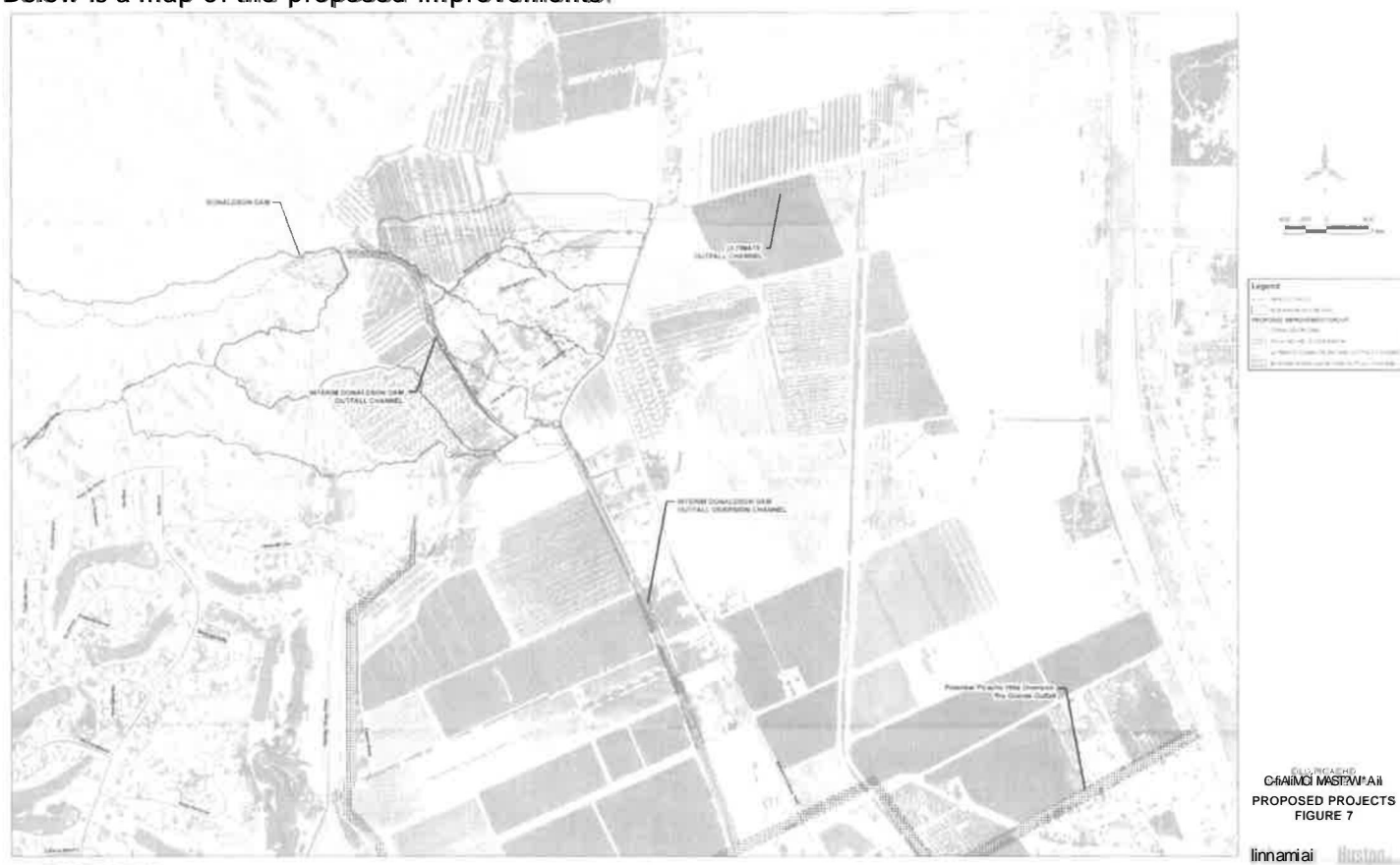
URS

Old Picacho

The community of Old Picacho is located west of Las Cruces, north of Picacho Avenue, on Shalom Colony Trail near the base of Picacho Mountain. The contributing water shed is 1.92 square miles with an elevation change of over 1050 ft. The community has 1 main drainage feature, which is a dam constructed on private property. It is not known if the dam was constructed to any engineering design standards. While this structure does not fall within the County's jurisdiction, the Old Picacho Drainage Master Plan was commissioned to determine the deficiencies and the potential improvements. The estimated cost of the improvement is \$8,650,000. Below is a map showing the contributing watershed.



Below is a map of the proposed improvements.



Salem

The Colonia of Salem is a small community located approximately 45 miles northwest of Las Cruces, NM, and 5.1 miles northwest of Hatch, NM. Interstate 25 passes through the basin and has many culverts that provide stormwater conveyance under I-25. The Salem watershed boundary contains four small dams or “floodwater retarding structures” designed and built by the USDA Soil Conservation Service in cooperation with the Caballo Soil and Water Conservation District. The dams were never intended to serve as flood control dams and therefore, do not meet the present design standards. The contributing watershed is approximately 14.5 square miles; however the sub-basin drainage areas to the four dams and outfall locations are small and range from about 1 square mile to approximately 3.7 square miles. Most of the area is considered to undeveloped range land with an elevation change of approximately 700 feet. The community of Salem is a developed urban area, and the valley areas below the dams are used as agricultural land. A Drainage Master Plan was completed in 2016 that was intended to present proposed options that would intercept stormwater runoff upstream of the developed area and utilize the controlled release of runoff through Salem without adverse affects to the residents. It was determined that the most cost effective solution is a combination of options that would include roadway improvements, reroute runoff from a major basin as well as the stormwater released by the South Salem Dam, and constructing a single detention pond. The proposed projects have an estimated cost of \$ 1,700,000. Below is a map showing the contributing watershed.



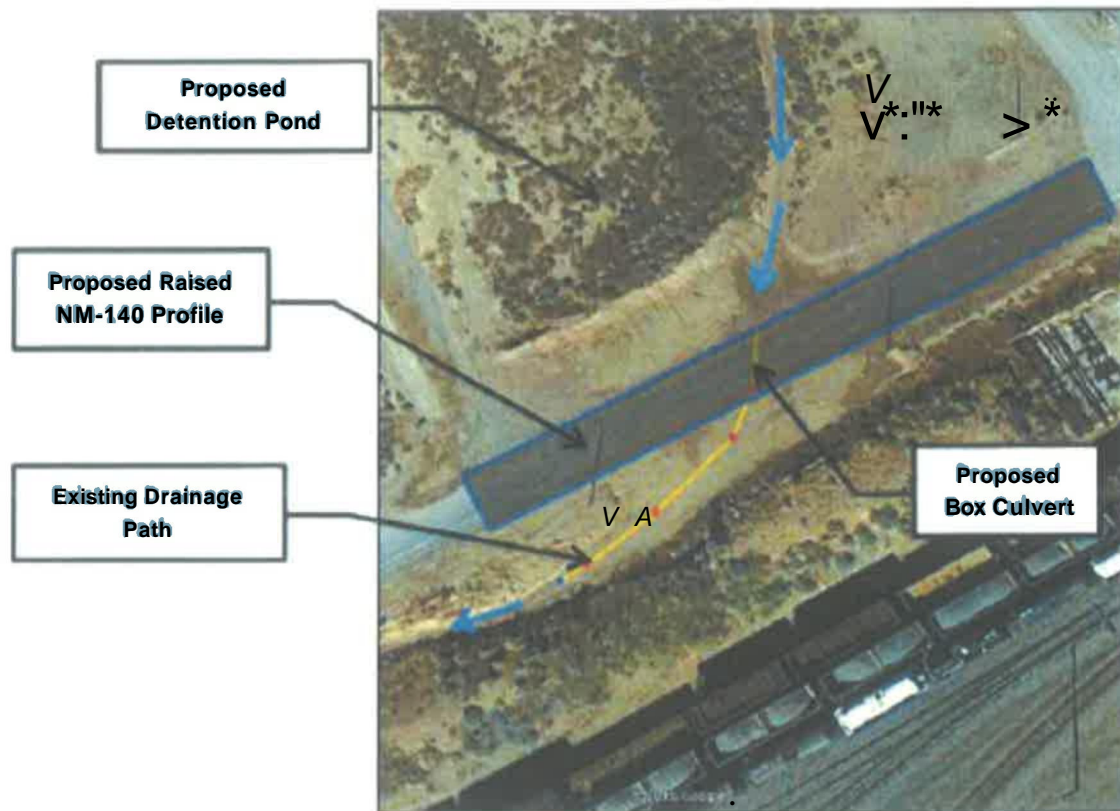
Rincon

Rincon is located along Interstate 25, approximately 33 miles north of Las Cruces, NM. Rincon lies north of the Rincon Arroyo, which contributes stormwater runoff to the Rio Grande to the south. Stormwater flows in the Rincon Arroyo only affect the community during extreme storm events and are beyond the scope of this project. The community of Rincon has inadequate flood control infrastructure to mitigate runoff generated from less frequent events in the watershed north of I-25. The contributing watershed is approximately 1.62 square miles with an elevation change of approximately 400 ft. A Drainage Master Plan was completed in 2014 that was intended to analyze existing drainage conditions in the contributing watershed, determine deficiencies and propose improvements. It was determined that the most cost effective solution includes construction of 2 channels to divert discharge to the Rincon Arroyo, on-site drainage infrastructure improvements and roadway improvements. The proposed projects have an estimated cost of \$1,000,000. Below is a map showing the contributing watershed.



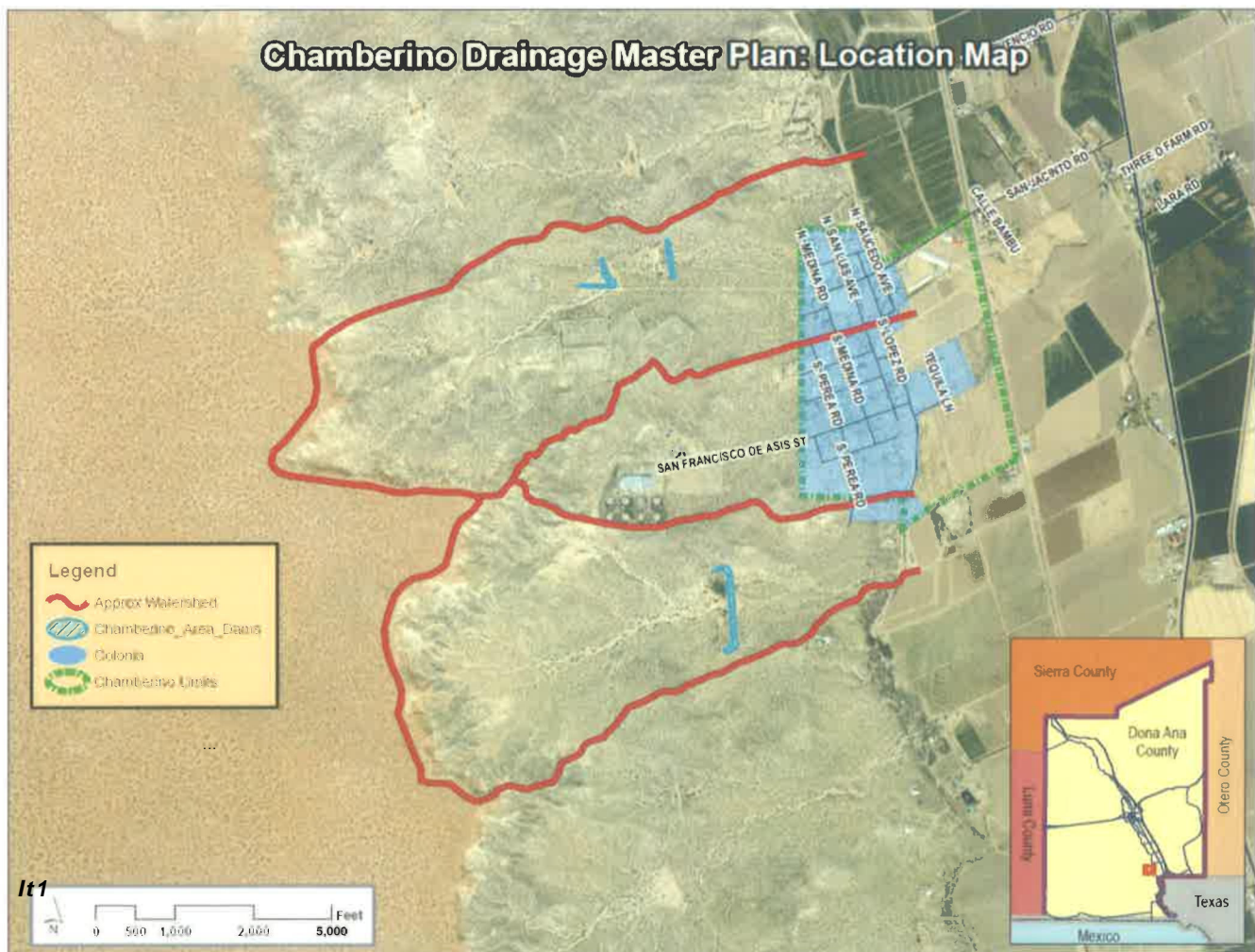
The following 3 aerial photos show the proposed improvements.



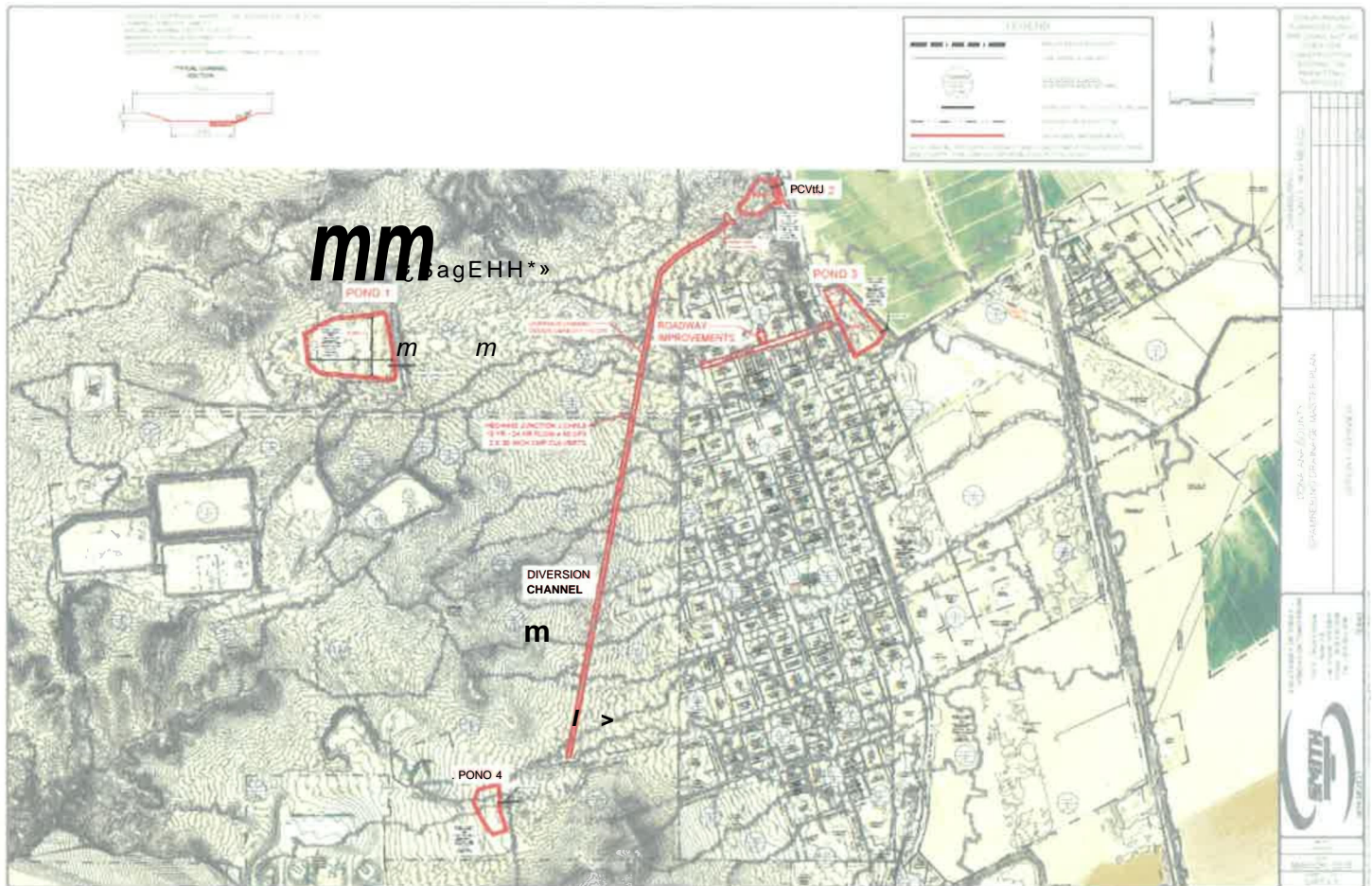


Chamberino

Chamberino is located approximately 24.4 miles southwest of Las Cruces, NM, and 20.8 miles northwest of Sunland Park, NM. Chamberino has several existing unregulated dams within the watershed, however they were never intended to protect people or homes and do not meet any of the current design standards. The top of the watershed's south western quadrant contains 5 abandoned treatment ponds with vast storage capacity that function as full retention basins. The contributing watershed is approximately 1.8 square miles with an elevation change of approximately 300 feet. A Drainage Master Plan was completed in 2016 that was intended to analyze existing drainage conditions in the contributing watershed, determine deficiencies and propose improvements. It was determined that the most cost effective solution is an option that diverts off-site flows around town and to redirect flows within the town where possible. This option includes the rehabilitation of an existing dam, construction of a diversion channel and construction of several retention ponds. The proposed projects have an estimated cost of \$ 2,700,000. Below is a map showing the contributing watershed.



Below is a map of proposed improvements for Chamberino.



APPENDIX D

WASTEWATER MANAGEMENT SYSTEMS

- **Wastewater Systems Reference Map**
- **Project Summaries**



0 1000 2000 3000 Feet
6/22/2015

Doña Ana County Wastewater System

Legend

- Doña Ana County Wastewater Lines
- Camino Real Regional Utility Authority
- Major Roads
- Incorporated Municipal Boundary
- Doña Ana County Boundary



Chaparral Wastewater Treatment System Project

A 2000 Facility Plan estimated the cost for this project to be over \$35,000,000. As of today there are 4 completed phases totaling \$9,294,201, thus leaving approximately \$25,705,799 to complete the project. The following are the completed phases and cost:

- Phase 1A was completed on 7/2008 which included construction of the Chaparral treatment plant, a lift station and 206 service connections. Total cost – \$5,927,066
- Phase 1B was completed on 11/2009; was for construction of 58 service connections and a lift station. Total cost - \$1,685,608
- Phase 2A was completed on 2/2012; was for construction of 133 service connections. Total cost - \$585,787
- Phase 3A was completed on 5/2014; was for construction of 154 service connections. Total cost - \$1,095,740

The current phase is 1C which a lift station has been completed and construction of collection lines and force main is scheduled to begin next month. An estimated cost for this phase is \$3,190,000 and of which we have received \$2,246,886 leaving \$943,114 to complete this phase.

Asset Management Plan 2016

- Cost based on deferred maintenance, deficiency or life safety issues - replacement of an air valve actuator at an estimated cost of \$10,000.
- Cost based on total life cycle replacement of 10+ years is at \$736,700.
- Infrastructure Capital Improvement Plan (ICIP) request - \$920,685

South Central Wastewater Treatment Plant and Collection system upgrades and repairs

The treatment plant and collection system was constructed in 2003 to serve the communities of the South Central region of Doña Ana County. This region includes the following communities, Berino, Chamberino, Montana Vista, La Mesa, San Miguel and Vado/Del Cerro. Also, through an agreement with Lower Rio Grande Public Water Works Authority, we take wastewater flow from the Mesquite area and will soon include the Brazito area.

Currently, the County serves over 2,200 residents, 404 Mesquite residents and an estimated amount of 1,400 residents will be from the Brazito area.

The life expectancy of this system is 20 years. In order to protect, and continue to maintain and operate effectively repairs and improvements will be required. The County has invested over \$400,000 in the replacement of the UV system and manhole repairs.

Wastewater Treatment Plant

- Upgrade to deteriorating head-works structure
- An increase of bio-solids handling capacity
- Upgrade to the aeration system
- Concrete drying beds for sludge
- Grit chamber replacement
- Influent channel concrete repair

- Electrical equipment
 - Structural repairs
- ICIP request - \$3,625,000 includes engineering services.

Asset Management Plan 2016

- Cost based on deferred maintenance, deficiency or life safety issues - include the above mentioned issues is at an estimated cost of \$647,848.72.
- Cost based on total life cycle replacement of 10+ years is at \$5,507,950.

Wastewater Collection

- Lift station repairs/rehab
 - Manhole repairs/rehab
 - Main line replacements and extensions
- ICIP request - \$1,625,000

Rincon Wastewater Treatment Plant and Collection Systems

The plant was constructed in 2002 which serves over 90 households. Life expectancy is also 20 years.

Asset Management Plan 2016

- Treatment Plant - Cost based on deferred maintenance, deficiency or life safety issues - replacement of aeration system at an estimated cost of \$228,681.60.
- Treatment Plant -Cost based on total life cycle replacement of 10+ years is at \$407,500.

Salem Wastewater Treatment Plant

The plant was constructed in 2002 which serves over 220 households. Life expectancy is 20 years

Asset Management Plan 2016

- Treatment Plant - Cost based on deferred maintenance, deficiency or life safety issues - replacement of influent valves at an estimated cost of \$20,000
- Treatment Plant - Cost based on total life cycle replacement of 10+ years is at \$210,058.33.

Sleepy Farm/Vado

Residents of the Sleepy Farm area in Vado have requested the County to provide wastewater service due to septic tank issues that they are experiencing. Issues include leach field failures and standing septic water on the ground. With the assistance of the Ocotillo Institute for Social Justice and local community leaders we have met with them. During these meets we had an employee from NM Environment and a representative from a local septic tank business who offered free estimates to do individual systems assessments. Funding resource information from HUD and US Rural Development was passed on and made available for those who may need it for repairs or replacement of their septic systems.

The County with funding assistance from Border Environment Cooperation Commission (BECC) will be initiating a Preliminary Engineering and Environmental Report for this project ICIP request - \$3,400,000.